

## Product datasheet for PH317830

### REPS2 (NM\_001080975) Human Mass Spec Standard

#### Product data:

Product Type:	Mass Spec Standards
Description:	REPS2 MS Standard C13 and N15-labeled recombinant protein (NP_001074444)
Species:	Human
Expression Host:	HEK293
Expression cDNA Clone or AA Sequence:	RC217830
Predicted MW:	71.2 kDa
Protein Sequence:	>RC217830 representing NM_001080975 Red=Cloning site Green=Tags(s)

MEAAAAAAAAAAAAAAAAAGGGCGSGPPPLLLSEGEQQCYSELFARCAGAAGGGPGSGPPEAARVAPGTATA  
AAGPVADLFRASQLPAETLHQITELCGAKRVGYFGPTQFYIALKLIAAAQSGLPVRIESIKCELPLPRFM  
MSKNDGEIRFGNPAELHGTVQIPYLTTEKNSFKRMDDEDKQETQSPTMSPLASPPSSPPHYQRVPLSHG  
YSKLRSSAEQMHPAPYEQPLVQPEGSSSGGPGTKPLRHQASLIRSFVERELQDNSSYPDEPWITEE  
QREYYVNFQFRSLQDPSSFISGSVAKNFFTKSKLSIPELSYIWELSDADCDGALTLPEFCAAFHLIVARK  
NGYPLPEGLPPTLQPEYLQAAFPKPKWDCQLFDSYSESLPANQQPRDLNRMEKTSVKDMADLPVPNQDVT  
SDDKQALKSTINEALPKDVEDPATPKDSNSLKARPRSRSYSSTSIEEAMKRGEDPPTPPPRPQKTHSRA  
SSLDLNVFQPSVPATKSGLLPPPPALPPRPCPSQSEQVSEAELLPQLSRAPSQAEESSPAKKDVLYSQP  
PSKPIRRKFRPENQATENQEPSTAASGPASAATMKPHPTVQKQSSKQKKAIQTAIRKNKEANAVLARLNS  
ELQQQLKEVHQRERIALENQLEQLRPVTVL

TRTRPLEQKLISEEDLAANDILDYKDDDDKV

Tag:	C-Myc/DDK
Purity:	> 80% as determined by SDS-PAGE and Coomassie blue staining
Concentration:	>0.05 µg/µL as determined by microplate BCA method
Labeling Method:	Labeled with [U- 13C6, 15N4]-L-Arginine and [U- 13C6, 15N2]-L-Lysine
Buffer:	25 mM Tris-HCl, 100 mM glycine, pH 7.3
Storage:	Store at -80°C. Avoid repeated freeze-thaw cycles.
Stability:	Stable for 3 months from receipt of products under proper storage and handling conditions.
RefSeq:	<a href="#">NP_001074444</a>
RefSeq Size:	7961



[View online »](#)

RefSeq ORF: 1977

Synonyms: POB1

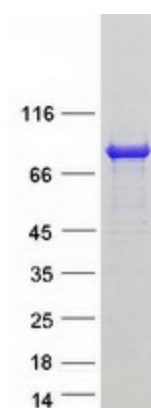
Locus ID: 9185

UniProt ID: [Q8NFH8](#)

Cytogenetics: Xp22.2

**Summary:** The product of this gene is part of a protein complex that regulates the endocytosis of growth factor receptors. The encoded protein directly interacts with a GTPase activating protein that functions downstream of the small G protein Ral. Its expression can negatively affect receptor internalization and inhibit growth factor signaling. Multiple transcript variants encoding different isoforms have been found for this gene. [provided by RefSeq, Jul 2008]

### Product images:



Coomassie blue staining of purified REPS2 protein (Cat# [TP317830]). The protein was produced from HEK293T cells transfected with REPS2 cDNA clone (Cat# [RC217830]) using MegaTran 2.0 (Cat# [TT210002]).