

Product datasheet for PH317726

PSG8 (NM_182707) Human Mass Spec Standard

Product data:

Product Type:	Mass Spec Standards
Description:	PSG8 MS Standard C13 and N15-labeled recombinant protein (NP_874366)
Species:	Human
Expression Host:	HEK293
Expression cDNA Clone or AA Sequence:	RC217726
Predicted MW:	47.6 kDa
Protein Sequence:	>RC217726 representing NM_182707 Red=Cloning site Green=Tags(s) MGLLSAPPCTQRITWKGLLLTASLLNFWNPPTTAQVTIEAQPTKVSEGKDVLLL VHNL PQLNGTYIWKYKQ QIRDLYHYITSYVVDGQIIYGPAYSGRETIYSNASLLIQNVTQEDAGSYTLHIIMGGDENRGVGTGHFTF TLYLETPKPSISSKLNPREAMEAVSLTCDPETPDASYLWWMNGQSLPMSHRLQLSETNRTLFLLVGVTKY TAGPYECEIRNPVSASRSDPFTLNLLPKLPKPYITINNLKPRENKDVLFNFTCEPKSENYTYIWWLNGQSL PVSPRVKRPIENRILILPSVTRNETGPYQCEIRDQYGGIRSYPVTLNVL YGPDLPRIYPSFTYYRSGEVL YLSCSADSNPPAQYSWTINGKFQLSGQKLFIPQITTKHSGLYACSVRNSATGKESKSMYKVSQKRIIPV SLAIGI TRTRPLEQKLI SEEDLAANDILDYKDDDDKV
Tag:	C-Myc/DDK
Purity:	> 80% as determined by SDS-PAGE and Coomassie blue staining
Concentration:	>0.05 µg/µL as determined by microplate BCA method
Labeling Method:	Labeled with [U- ¹³ C ₆ , ¹⁵ N ₄]-L-Arginine and [U- ¹³ C ₆ , ¹⁵ N ₂]-L-Lysine
Buffer:	25 mM Tris-HCl, 100 mM glycine, pH 7.3
Storage:	Store at -80°C. Avoid repeated freeze-thaw cycles.
Stability:	Stable for 3 months from receipt of products under proper storage and handling conditions.
RefSeq:	<u>NP_874366</u>
RefSeq Size:	1281
RefSeq ORF:	1278
Synonyms:	PSG1



[View online »](#)

Locus ID: 440533

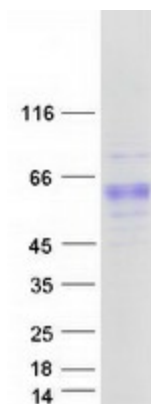
UniProt ID: [Q9UQ74](#)

Cytogenetics: 19q13.2

Summary: The human pregnancy-specific glycoproteins (PSGs) are a group of molecules that are mainly produced by the placental syncytiotrophoblasts during pregnancy. PSGs comprise a subgroup of the carcinoembryonic antigen (CEA) family, which belongs to the immunoglobulin superfamily. For additional general information about the PSG gene family, see PSG1 (MIM 176390).[supplied by OMIM, Oct 2009]

Protein Families: Secreted Protein

Product images:



Coomassie blue staining of purified PSG8 protein (Cat# [TP317726]). The protein was produced from HEK293T cells transfected with PSG8 cDNA clone (Cat# [RC217726]) using MegaTran 2.0 (Cat# [TT210002]).