

Product datasheet for PH317721

SEPTIN14 (NM_207366) Human Mass Spec Standard

Product data:

Product Type:	Mass Spec Standards
Description:	SEPT14 MS Standard C13 and N15-labeled recombinant protein (NP_997249)
Species:	Human
Expression Host:	HEK293
Expression cDNA Clone or AA Sequence:	RC217721
Predicted MW:	49.8 kDa
Protein Sequence:	>RC217721 representing NM_207366 Red=Cloning site Green=Tags(s) MAERTMAMPTQIPADGDTQKENNIRCLTTIGHFGFECLPNQLVSR SIRQGFTFNILCVGETGIGKSTLID TLFNTNLKDNKSSHFYSNVGLQIQTYELQESNVQLKLTVVETVGYGDQIDKEASYQPIVDYIDAQFEAYL QEELKIKRSLFEYHDSRVHVCLYFISPTGHSLSLDLLTMKNLDSKVNIIPLIAKADTISKNDLQTFKNK IMSELISNGIQIYQLPTDEETAQAANSVSGLLPFVAVVGSTDEVKVGKRMVGRHYPWGLQVENENHCD FVKLRDMLLCTNMENLKEKTHTQHYECYRYQKLQKMGFTDVGPNQPVSFQEIFEAKRQEFYDQCQREEE ELKQRFMQRVKEKEATFKEAEKELQDKFEHLKMIQEEIRKLEEEKKQLEGEIIDFYKMKAAASEALQTQL STDTKKDKHRKK TRTRPLEQKLI SEEDLAANDILDYKDDDDKV
Tag:	C-Myc/DDK
Purity:	> 80% as determined by SDS-PAGE and Coomassie blue staining
Concentration:	>0.05 µg/µL as determined by microplate BCA method
Labeling Method:	Labeled with [U- ¹³ C ₆ , ¹⁵ N ₄]-L-Arginine and [U- ¹³ C ₆ , ¹⁵ N ₂]-L-Lysine
Buffer:	25 mM Tris-HCl, 100 mM glycine, pH 7.3
Storage:	Store at -80°C. Avoid repeated freeze-thaw cycles.
Stability:	Stable for 3 months from receipt of products under proper storage and handling conditions.
RefSeq:	<u>NP_997249</u>
RefSeq Size:	3785
RefSeq ORF:	1296
Synonyms:	SEPT14



[View online »](#)

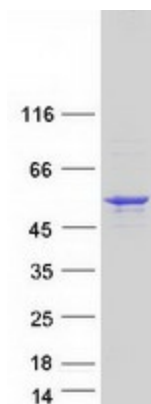
Locus ID: 346288

UniProt ID: [Q6ZU15](#)

Cytogenetics: 7p11.2

Summary: SEPT14 is a member of the highly conserved septin family of GTP-binding cytoskeletal proteins implicated in membrane transport, apoptosis, cell polarity, cell cycle regulation, cytokinesis, and other cellular functions (Peterson et al., 2007 [PubMed 17922164]).[supplied by OMIM, Jul 2008]

Product images:



Coomassie blue staining of purified SEPTIN14 protein (Cat# [TP317721]). The protein was produced from HEK293T cells transfected with SEPTIN14 cDNA clone (Cat# [RC217721]) using MegaTran 2.0 (Cat# [TT210002]).