

## Product datasheet for PH317720

### MYBPC3 (NM\_000256) Human Mass Spec Standard

#### Product data:

Product Type:	Mass Spec Standards
Description:	MYBPC3 MS Standard C13 and N15-labeled recombinant protein (NP_000247)
Species:	Human
Expression Host:	HEK293
Expression cDNA Clone or AA Sequence:	RC217720
Predicted MW:	140.8 kDa
Protein Sequence:	>RC217720 representing NM_000256 Red=Cloning site Green=Tags(s)

MPEPGKKPVSAFSSKPPRSVEVAAGSPAVFEAETERAGVKVRWQRGGSDISASNKYGLATEGRHTLTVRE  
VGPADQGSYAVIAGSSKVKFDLKVIEAEKAEPMLAPAPAPAEATGAPGEAPAPAAELGESAPSPKGS  
ALNGPTGAPDDPIGLFVMRPQDGEVTVGGSSITFSARVAGASLLKPPVVKWFKGKWDLSKVGQHLQLH  
DSYDRASKVYLFELHITDAQPAFTGSYRCEVSTKDKFDCSNFNLTVHEAMGTGDLDLLSAFRRTSLAGGG  
RRISDSHEDTGILDFSSLLKKRDSFRTPRDSKLEAPAEEDVWEILRQAPPSEYERIAFYQVGTDLRGLK  
RLKGMRRDEKKSTAFQKKLEPAYQVSKGHKIRLTVELADHDAEVKWLKNGQEIQMSGSKYIFESIGAKRT  
LTISSQSLADDAAYQCVVGGCEKSTELFVKEPPVLIITRPLEDQLVMVGQRVEFECEVSEEGAQVWKLKDG  
VELTREETFKYRFKKDQQRHHLIINEAMLEDAGHYALCTSGGQALAEIVQEKKLEVVYQSIADLMVGA  
QAVFKCEVSDENVRGVWLNKNGKELVPDSRIKVSIGRVHKLITDDVTPADEADYSFVPEGFACNLSAKLH  
FMEVKIDFVPRQEPKIHLDPCGRIPDTIVVVAGNKLRLDVPISGDPAPTIVWQKAITQGNKAPARPAPD  
APEDTGDSDWEVDFDKLLCETEGRVRVETTKDRSIFTVGAKEKEDEGVYTVTKNPVGEDQVNLTKVID  
VPDAPAAPKISNVGEDSCTVQWEPPAYDGGQPIILGYILERKKKSYRWMRLNFDLIQELSHEARRMIEGV  
VYEMRVYAVNAIGMSRSPASQPFMPPIGPPSEPTHLAVEDVSDTTVSLKWRPPERVGGAGLDGYSVEYCP  
EGCSEWVAALQGLTEHTSILVKDLPTGARLLFRVRAHNMAGPGAPVTTTEPVTVQEILQRPRQLPRHLR  
QTIQKKGEPVNLIPFQGKPRPQVWTWKEGQPLAGEEVSIRNSPTDITLFIARAARRVHSGTYQVTVRIE  
NMEDKATLVLQVVDKPSPPQDLRVTDAGLNVALEWKPQDVGNTLWGYTVQKADKKTMEWFTVLEHYR  
RTHCVPELIIIGNGYFRVFSQNMVGFSDRAATTKPEPVFIPRPGITYEPPNYKALDFSEAPSFTQPLVNR  
SVIAGYTAMLCCAVRGSPPKISWFKNGLDLGEDARFRMFSKQGVLTLEIRKPCPFDDGGIYVCRATNLQG  
EARCECRLEVRVPQ

TRTRPLEQKLISEEDLAANDILDYKDDDDKV

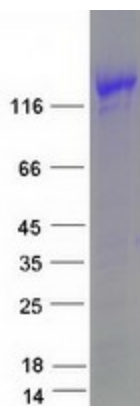
Tag:	C-Myc/DDK
Purity:	> 80% as determined by SDS-PAGE and Coomassie blue staining
Concentration:	>0.05 µg/µL as determined by microplate BCA method



[View online »](#)

<b>Labeling Method:</b>	Labeled with [U- <sup>13</sup> C <sub>6</sub> , <sup>15</sup> N <sub>4</sub> ]-L-Arginine and [U- <sup>13</sup> C <sub>6</sub> , <sup>15</sup> N <sub>2</sub> ]-L-Lysine
<b>Buffer:</b>	25 mM Tris-HCl, 100 mM glycine, pH 7.3
<b>Storage:</b>	Store at -80°C. Avoid repeated freeze-thaw cycles.
<b>Stability:</b>	Stable for 3 months from receipt of products under proper storage and handling conditions.
<b>RefSeq:</b>	<a href="#">NP_000247</a>
<b>RefSeq Size:</b>	4200
<b>RefSeq ORF:</b>	3822
<b>Synonyms:</b>	CMD1MM; CMH4; cMyBP-C; FHC; LVNC10; MYBP-C
<b>Locus ID:</b>	4607
<b>UniProt ID:</b>	<a href="#">Q14896</a> , <a href="#">A5YM48</a>
<b>Cytogenetics:</b>	11p11.2
<b>Summary:</b>	MYBPC3 encodes the cardiac isoform of myosin-binding protein C. Myosin-binding protein C is a myosin-associated protein found in the cross-bridge-bearing zone (C region) of A bands in striated muscle. MYBPC3, the cardiac isoform, is expressed exclusively in heart muscle. Regulatory phosphorylation of the cardiac isoform in vivo by cAMP-dependent protein kinase (PKA) upon adrenergic stimulation may be linked to modulation of cardiac contraction. Mutations in MYBPC3 are one cause of familial hypertrophic cardiomyopathy. [provided by RefSeq, Jul 2008]
<b>Protein Families:</b>	Druggable Genome
<b>Protein Pathways:</b>	Dilated cardiomyopathy, Hypertrophic cardiomyopathy (HCM)

### Product images:



Coomassie blue staining of purified MYBPC3 protein (Cat# [TP317720]). The protein was produced from HEK293T cells transfected with MYBPC3 cDNA clone (Cat# [RC217720]) using MegaTran 2.0 (Cat# [TT210002]).