

Product datasheet for PH317707

SSH3BP1 (ABI1) (NM_005470) Human Mass Spec Standard

Product data:

Product Type:	Mass Spec Standards
Description:	ABI1 MS Standard C13 and N15-labeled recombinant protein (NP_005461)
Species:	Human
Expression Host:	HEK293
Expression cDNA Clone or AA Sequence:	RC217707
Predicted MW:	55.1 kDa
Protein Sequence:	>RC217707 representing NM_005470 Red=Cloning site Green=Tags(s)
	MAELQMLLEEEIPSGKRALIESYQNLTRVADYCENNYIQATDKRKALEETKAYTTQSLASVAYQINALAN NVLQLLDIQASQLRRMESSINHISQTVDIHKEKVARREIGILTTNKNTSRTHKIIAPANMERPVRYIRKP IDYTVLDDVGHGVKWLKAKHGNNQPARTGTLSRNPPTQKPPSPMSSGRGTLGRNTPYKTLPEVKPPTVP NDYMTSPARLGSQHSPGRTASLNQRPRTHSGSSGSGSRENSGSSSIGIPIAVPTSPPTIGPAPGSAPG SQYGTMRQISRHNSTTSSTSSGGYRRTPSVTAQFSAQPHVNGGPLYSQNSIADSPTPPPPPPDDIPMF DDSPPPPPPPVDYEDEEAADVQYNDPYADGDPAWAPKNYIEKVVAIYDYTKDKDEL SFMEGAIIVVIK KNDDGWYEGVCNRVTGLFPGNYVESIMHYTD
	TRTRPLEQKLI SEEDLAANDILDYKDDDDKV
Tag:	C-Myc/DDK
Purity:	> 80% as determined by SDS-PAGE and Coomassie blue staining
Concentration:	>0.05 µg/µL as determined by microplate BCA method
Labeling Method:	Labeled with [U- ¹³ C ₆ , ¹⁵ N ₄]-L-Arginine and [U- ¹³ C ₆ , ¹⁵ N ₂]-L-Lysine
Buffer:	25 mM Tris-HCl, 100 mM glycine, pH 7.3
Storage:	Store at -80°C. Avoid repeated freeze-thaw cycles.
Stability:	Stable for 3 months from receipt of products under proper storage and handling conditions.
RefSeq:	NP_005461
RefSeq Size:	3725
RefSeq ORF:	1524
Synonyms:	ABI-1; ABLBP4; E3B1; NAP1BP; SSH3BP; SSH3BP1

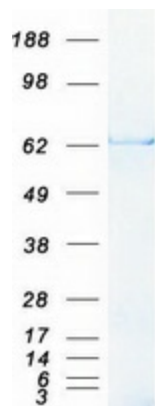


[View online »](#)

Locus ID: 10006
UniProt ID: [Q8IZP0](#)
Cytogenetics: 10p12.1
Summary:

This gene encodes a member of the Abelson-interactor family of adaptor proteins. These proteins facilitate signal transduction as components of several multiprotein complexes, and regulate actin polymerization and cytoskeletal remodeling through interactions with Abelson tyrosine kinases. The encoded protein plays a role in macropinocytosis as a component of the WAVE2 complex, and also forms a complex with EPS8 and SOS1 that mediates signal transduction from Ras to Rac. This gene may play a role in the progression of several malignancies including melanoma, colon cancer and breast cancer, and a t(10;11) chromosomal translocation involving this gene and the MLL gene has been associated with acute myeloid leukemia. Alternatively spliced transcript variants encoding multiple isoforms have been observed for this gene, and a pseudogene of this gene is located on the long arm of chromosome 14. [provided by RefSeq, Sep 2011]

Product images:



Coomassie blue staining of purified ABI1 protein (Cat# [TP317707]). The protein was produced from HEK293T cells transfected with ABI1 cDNA clone (Cat# [RC217707]) using MegaTran 2.0 (Cat# [TT210002]).