

Product datasheet for PH317672

CCL14 (NM_004166) Human Mass Spec Standard

Product data:

Product Type:	Mass Spec Standards
Description:	CCL14 MS Standard C13 and N15-labeled recombinant protein (NP_004157)
Species:	Human
Expression Host:	HEK293
Expression cDNA Clone or AA Sequence:	RC217672
Predicted MW:	10.68 kDa
Protein Sequence:	>RC217672 representing NM_004166 Red=Cloning site Green=Tags(s) MKISVAAIPFFLLITIALGKTESSSRGPYHPSECCFTYTTYKIPRQRIMDYETNSQCSKPGIVFITKR GHSVCTNPSPDKWVQDYIKDMKEN TRTRPLEQKLISEEDLAANDILDYKDDDDKV
Tag:	C-Myc/DDK
Purity:	> 80% as determined by SDS-PAGE and Coomassie blue staining
Concentration:	>0.05 µg/µL as determined by microplate BCA method
Labeling Method:	Labeled with [U- 13C6, 15N4]-L-Arginine and [U- 13C6, 15N2]-L-Lysine
Buffer:	25 mM Tris-HCl, 100 mM glycine, pH 7.3
Storage:	Store at -80°C. Avoid repeated freeze-thaw cycles.
Stability:	Stable for 3 months from receipt of products under proper storage and handling conditions.
RefSeq:	NP_004157
RefSeq Size:	1344
RefSeq ORF:	279
Synonyms:	CC-1; CC-3; CKb1; FLJ16015; HCC-1; HCC-3; MCIF; NCC-2; NCC2; SCYA14; SCYL2; SY14
Locus ID:	6358
UniProt ID:	Q16627
Cytogenetics:	17q12



[View online »](#)

Summary:

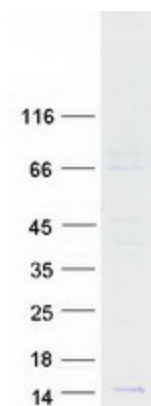
This gene, chemokine (C-C motif) ligand 14, is one of several CC cytokine genes clustered on 17q11.2. The CC cytokines are secreted proteins characterized by two adjacent cysteines. The cytokine encoded by this gene induces changes in intracellular calcium concentration and enzyme release in monocytes. Multiple transcript variants encoding different isoforms have been found for this gene. Read-through transcripts are also expressed that include exons from the upstream cytokine gene, chemokine (C-C motif) ligand 15, and are represented as GeneID: 348249. [provided by RefSeq, Dec 2009]

Protein Families:

Druggable Genome, Secreted Protein

Protein Pathways:

Chemokine signaling pathway, Cytokine-cytokine receptor interaction

Product images:

Coomassie blue staining of purified CCL14 protein (Cat# [TP317672]). The protein was produced from HEK293T cells transfected with CCL14 cDNA clone (Cat# [RC217672]) using MegaTran 2.0 (Cat# [TT210002]).