

## Product datasheet for PH317652

### CARD10 (NM\_014550) Human Mass Spec Standard

#### Product data:

Product Type:	Mass Spec Standards
Description:	CARD10 MS Standard C13 and N15-labeled recombinant protein (NP_055365)
Species:	Human
Expression Host:	HEK293
Expression cDNA Clone or AA Sequence:	RC217652
Predicted MW:	115.8 kDa
Protein Sequence:	>RC217652 representing NM_014550 Red=Cloning site Green=Tags(s)

MPGRAEAGEAEEEEAGAGSGSEAEEDALWERIEGVRHRLARALNPAKLTPYLRQCRVIDEQDEEEVLSTYR  
FPCRVNRTGRMLDILRCRGKRGYEAFLAELFYYPEHFTLLTGQEPAQRCMILDEEGPEGLTQFLMTEV  
RRLREARKSQLQREQQLQARGVLEERAGLEQRLRDQQQAQERCQRLREDWEAGSLELLRLKDENYMIA  
MRLAQLSEEKNSAVLRSRDLQLAVDQLKLVSRLEEECALLRRARGPPPGAAEKEKEKEKEPEPNVDLV  
SELRAENQRLTASLRELQEQLEASRPGAGSERILLDILEHDWREAQDSRQELCQKLHAVQGELQWAE  
ELRDQYLQEMEDLRLKHRTLKDCDLKHRMATVLAQLEEIEKERDQAIQSRDRIQLQYSQSLIEKDQYR  
KQVRGLEAERDELTTLSLEGTKALLEVQLQRAQGGTCLKACASSHSLCSNLSSSTWSLSEFPSPGGPE  
ATGEEAVMGGPEPHNSEEATDSEKEINRLSILPFPPSAGSILRRQREEDPAPPKRSFSSMSDITGSVTLK  
PWSPGLSSSSSDSVWPLGKPEGLLARGCGLDFLNRLAIRVSGRSPGGPEPQDKGPDGLSFYGDWRWG  
AVVRRVLSGPGSARMEPREQRVEAAGLEGACLEAEAQQRTLLWNQGSTLPSLMDSKACQSFHEALEAWAK  
GPGAEPFYIRANLTLPERADPHALCVKAQEILRLVDSAYKRRQEWFCRTRVDPLTLRDLDRGTVPNYQRAQ  
QLLEVEQEKCLPSSRHRGPRSNLKKRALDQLRLVRPKVPGAPAGDSPDQLLLEPCAEPERSLRPYSLVRPL  
LVSALRPVLLPECLAPRLIRNLLDLPSRLDFVQCPAESLSGEELCPSSAPGAPKAQPATPGLGSRIRA  
IQESVGGKKHCLLELGARGVRELVQNEIYPIVIHVEVTEKNVREVRGLLRPGWRDSELLRQCRGSEQVLV  
GLPCSWVQVPAHEWGHAEELAKVVRGRILQEQRARLVWVECGSSRGCPSSEA

TRTRPLEQKLISEEDLAANDILDYKDDDDKV

Tag:	C-Myc/DDK
Purity:	> 80% as determined by SDS-PAGE and Coomassie blue staining
Concentration:	>0.05 µg/µL as determined by microplate BCA method
Labeling Method:	Labeled with [U- <sup>13</sup> C <sub>6</sub> , <sup>15</sup> N <sub>4</sub> ]-L-Arginine and [U- <sup>13</sup> C <sub>6</sub> , <sup>15</sup> N <sub>2</sub> ]-L-Lysine
Buffer:	25 mM Tris-HCl, 100 mM glycine, pH 7.3
Storage:	Store at -80°C. Avoid repeated freeze-thaw cycles.

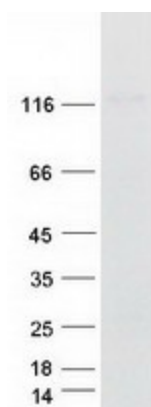


[View online »](#)

Stability:	Stable for 3 months from receipt of products under proper storage and handling conditions.
RefSeq:	<a href="#">NP_055365</a>
RefSeq Size:	3912
RefSeq ORF:	3096
Synonyms:	BIMP1; CARMA3
Locus ID:	29775
UniProt ID:	<a href="#">Q9BWT7</a>
Cytogenetics:	22q13.1

**Summary:** The caspase recruitment domain (CARD) is a protein module that consists of 6 or 7 antiparallel alpha helices. It participates in apoptosis signaling through highly specific protein-protein homophilic interactions. Like several other CARD proteins, CARD10 belongs to the membrane-associated guanylate kinase (MAGUK) family and activates NF-kappa-B (NFKB; see MIM 164011) through BCL10 (MIM 603517) (Wang et al., 2001 [PubMed 11259443]). [supplied by OMIM, Mar 2008]

### Product images:



Coomassie blue staining of purified CARD10 protein (Cat# [TP317652]). The protein was produced from HEK293T cells transfected with CARD10 cDNA clone (Cat# [RC217652]) using MegaTran 2.0 (Cat# [TT210002]).