

## Product datasheet for PH317637

### Ataxin 2 like (ATXN2L) (NM\_148414) Human Mass Spec Standard

#### Product data:

Product Type:	Mass Spec Standards
Description:	ATXN2L MS Standard C13 and N15-labeled recombinant protein (NP_680780)
Species:	Human
Expression Host:	HEK293
Expression cDNA Clone or AA Sequence:	RC217637
Predicted MW:	115.4 kDa
Protein Sequence:	>RC217637 representing NM_148414 Red=Cloning site Green=Tags(s)

MLKPQLQQSQPQQPPPTQQAVARRPPGGTSPPNGGLPGPLATSAAAPGPPAAAASPCLGPVAAAGSGLR  
RGAEGILAPQPPPPQQHQERPGAAAIGSARGQSTGKGGPQSPVFEGVYNNRMLHFLTAVVGSTCDVKVK  
NGTTYEGIFKTLSSKFELAVDAVHRKASEPAGGPRREDIVDTMVFKPSDVMLVHFRNVDFNYATKDKFTD  
SAIAMNSKVNGEHKEKVLQRWEGGDSNSDDYDLESDMSGWDPNEMFKFNEENYGVKTTYDSSLSSYVTP  
LEKDNSEEFQRQLRAAQLAREIESSPQYRLRIAMENDDGRTEEEKHSAVQRQSGRESPLASREGKYI  
PLPQRVREGPRGGVRCSSSRGGRPGLSSLPPRGPVHLDNSSPGPGSEARGINGGSRMSPKAQRPLRGAK  
TLSSPSNRPSGETSVPPPPAVGRMYPPRSPKSAAPAPISASCPEPPIGSAVPTSSASIPVTSVSDPGVG  
SISPASPKISLAPTDVKELSTKEPGRTLEPQELARIAGKVPGLQNEQKRFQLEELRKFQAQFKLQPS SSP  
ENSLDPFPRIILKEEPKKEKEVDGLLTSEPMGSPVSSKTESVSDKEDKPLAPSGGTEGPEQPPPPCPS  
QTGSPPVGLIKGEDKDEGPVAEQVKSTLNPNAKEFNPTKPLLSVNKSTSTPTSPGRTHSTPSIPVLT  
GQSGLYSPQYISYIPQIHMGPVQAPQMYYPVSVNSVPGQQGKYRGAKGSLPPQRSDQHQPASAPMMQA  
AAAAGPPLVAA TPYSSYIPYNPQQFPQPAMMQMAHYSPQPVFAPMLQSNRMLTSGSHPQAIIVSSSTP  
QYPSAEQPTPQALYATVHQSYPHHATQLHAHQPPATTPTGSQPQSQAAPSPVQHQAQAPHLGSGQPQ  
QNL YHPGALTGTPPSLPPGSAQSPQSSFPQPAAVYAIHHQQLPHGFTNMAHVTAHVQTGITAAPPH  
GAPHPQVMLLHPPQSHGGPPQGA VPSGVPAL SASTSPYPYIGHPQGEQPGQAPGFPGGADDRILCRV  
GRSHSRRRQGLAPGSVLCFPPSSLSCDPAAPLPTASPALSDPDCLLT

TRTRPLEQKLI SEEDLAANDILDYKDDDDKV

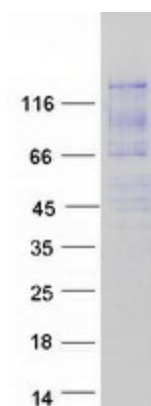
Tag:	C-Myc/DDK
Purity:	> 80% as determined by SDS-PAGE and Coomassie blue staining
Concentration:	>0.05 µg/µL as determined by microplate BCA method
Labeling Method:	Labeled with [U- <sup>13</sup> C <sub>6</sub> , <sup>15</sup> N <sub>4</sub> ]-L-Arginine and [U- <sup>13</sup> C <sub>6</sub> , <sup>15</sup> N <sub>2</sub> ]-L-Lysine
Buffer:	25 mM Tris-HCl, 100 mM glycine, pH 7.3



[View online »](#)

<b>Storage:</b>	Store at -80°C. Avoid repeated freeze-thaw cycles.
<b>Stability:</b>	Stable for 3 months from receipt of products under proper storage and handling conditions.
<b>RefSeq:</b>	<a href="#">NP_680780</a>
<b>RefSeq Size:</b>	4000
<b>RefSeq ORF:</b>	3291
<b>Synonyms:</b>	A2D; A2LG; A2LP; A2RP
<b>Locus ID:</b>	11273
<b>UniProt ID:</b>	<a href="#">Q8WWM7</a>
<b>Cytogenetics:</b>	16p11.2
<b>Summary:</b>	This gene encodes an ataxin type 2 related protein of unknown function. This protein is a member of the spinocerebellar ataxia (SCAs) family, which is associated with a complex group of neurodegenerative disorders. Several alternatively spliced transcripts encoding different isoforms have been found for this gene. [provided by RefSeq, Jul 2008]

### Product images:



Coomassie blue staining of purified ATXN2L protein (Cat# [TP317637]). The protein was produced from HEK293T cells transfected with ATXN2L cDNA clone (Cat# [RC217637]) using MegaTran 2.0 (Cat# [TT210002]).