

Product datasheet for PH317628

ARHGEF37 (NM_001001669) Human Mass Spec Standard

Product data:

Product Type:	Mass Spec Standards
Description:	FLJ41603 MS Standard C13 and N15-labeled recombinant protein (NP_001001669)
Species:	Human
Expression Host:	HEK293
Expression cDNA Clone or AA Sequence:	RC217628
Predicted MW:	76.1 kDa
Protein Sequence:	>RC217628 representing NM_001001669 Red=Cloning site Green=Tags(s)

MAKHGADEPSSRSGSPDREGRASEDRSLHQRRLAVRELIDTEVSYLHMLQLCASDIRSRLQQLPQGDLVDV
LFSNIDDIKVNRSRFLHDLQETASKEEQVQLVGNIFLEFQEELEQVYKYVCASYDQALLLVDTYRKEPE
LQRHIQGIIVEAVVPQAGSSGLSFLLVIPLQRITRYPLLLQKILENTVPDASAYPVLQRAVSALQDVNTNI
NEYKMRKEVASKYTKVEQLTLRERLARINTHTLSKKTTRLSQLLKQEAGLIPRTEDKEFDDLEERFQWVS
LCVTELEKNNVAAYLDNLQAFLYFRPHEYNLDIPEGPAVQYCNLARDLHLEAFLKFKQRLEGLVWQPLCSL
AKALLGPQNLIKKRLDKLLDFERVEEKLLEVGSVTYQEEAARHTYQALNSLLVAELPQFNQLVMQWLGQI
MCTFVTLQRDLAKQVLQRAEGSMAQLPHHHVPEPAFRKLVEDALGRTSNQLRSFQETFEKVQPPPTTQPL
LPGSERQVQALLSRYGPKLYQVTSNISGTGTLDLTLPRGQIVAILQNKDTKGNRGRWLVDGGRGYP
AGKLQLYHVVPSAEELRRQAGLNKDPRLTPEPSPALVPSIPTMNQVIAAYPFVARSSHEVSLQAGQPVT
ILEAQDKKGNPEWSLVEVNGQRGYVPSGFLARARSPVLWGWSLPS

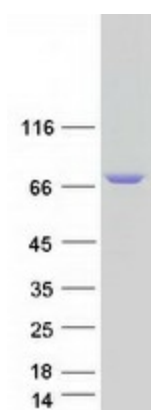
TRTRPLEQKLISEEDLAANDILDYKDDDDKV

Tag:	C-Myc/DDK
Purity:	> 80% as determined by SDS-PAGE and Coomassie blue staining
Concentration:	>0.05 µg/µL as determined by microplate BCA method
Labeling Method:	Labeled with [U- 13C6, 15N4]-L-Arginine and [U- 13C6, 15N2]-L-Lysine
Buffer:	25 mM Tris-HCl, 100 mM glycine, pH 7.3
Storage:	Store at -80°C. Avoid repeated freeze-thaw cycles.
Stability:	Stable for 3 months from receipt of products under proper storage and handling conditions.
RefSeq:	NP_001001669
RefSeq Size:	4865



[View online »](#)

RefSeq ORF:	2025
Locus ID:	389337
UniProt ID:	A11GU5
Cytogenetics:	5q32
Summary:	May act as a guanine nucleotide exchange factor (GEF).[UniProtKB/Swiss-Prot Function]

Product images:

Coomassie blue staining of purified ARHGEF37 protein (Cat# [TP317628]). The protein was produced from HEK293T cells transfected with ARHGEF37 cDNA clone (Cat# [RC217628]) using MegaTran 2.0 (Cat# [TT210002]).