

## Product datasheet for PH317578

### GPLD1 (NM\_001503) Human Mass Spec Standard

#### Product data:

Product Type:	Mass Spec Standards
Description:	GPLD1 MS Standard C13 and N15-labeled recombinant protein (NP_001494)
Species:	Human
Expression Host:	HEK293
Expression cDNA Clone or AA Sequence:	RC217578
Predicted MW:	92.35 kDa
Protein Sequence:	>RC217578 representing NM_001503 Red=Cloning site Green=Tags(s)

MSAFRLWPGLLIMLGS LCHRGS PGLSTHVEIGHRALEFLQLHNGRVNYRELLLEHQDAYQAGIVFPDCF  
YPSICKGGKFHDVSESTHWTPFLNASVHYIRENYPLPWEKDTEKLVAFLEFGITSHMAADVSWHSLGLEQG  
FLRTMGAIDFHGSYSEAH SAGDFGGDVL SQFEFNFNYLARRWYVPVKDLLGIYEKLYGRK VITENIVDC  
SHIQFLEM YGEMLAVSKLYPTYSTKSPFLVEQFQEYFLGGLDDMAFWSTNIYHLTSFMLENGTSDCNLPE  
NPLFIACGGQQNHTQGS KMQKND FHRNL TTSLETSVDRNIN YTERGVFFSVNSWTPDMSMFIYKALERNI  
RTMFIGGSQLSQKHVSSPLASYFLSFPYARLGWAMTSADLNQDGHGDLVVGAPGYSRPGHIHGRVYLIY  
GNDLGLPPVDL DLK EAHRILEGFQPSGRFGSALAVLDFNV DGV PDLAVGAPSVGSEQLTYKGAVVYVFG  
SKQGGMSSPNITIS CQDIYCNL GWTLAADVNGDSEPDLVIGSPFAPGGGKQKGI VAAFYSGPSLSDKE  
KLNVEAANWTVRGEEDFSWFGYSLHGVTVDNRTL LLLVGSPTWKNASRLGHLLHIRDEK KSLGRVYGYFPP  
NQQSWFTISGDKAMKGLGTSLSSGHVLMNGTLKQVLLVGP TYDDVSKVAFLTVTLHQGGATRM YALISD  
AQPLLLSTFSGDRRF SRFGGVLHLSDLDDGLDEI IMAAPLRIADVTSGLIGGEDGRVYVYNGKETT LGD  
MTGKCKSWITPCPEEKAQYVVISPEASSRFGSSLITVRSKAKNQV VVIAAGRSSLGARLSGALHVYSLGSD

TRTRPLEQKLI SEEDLAANDILDYKDDDDKV

Tag:	C-Myc/DDK
Purity:	> 80% as determined by SDS-PAGE and Coomassie blue staining
Concentration:	>0.05 µg/µL as determined by microplate BCA method
Labeling Method:	Labeled with [U- <sup>13</sup> C <sub>6</sub> , <sup>15</sup> N <sub>4</sub> ]-L-Arginine and [U- <sup>13</sup> C <sub>6</sub> , <sup>15</sup> N <sub>2</sub> ]-L-Lysine
Buffer:	25 mM Tris-HCl, 100 mM glycine, pH 7.3
Storage:	Store at -80°C. Avoid repeated freeze-thaw cycles.
Stability:	Stable for 3 months from receipt of products under proper storage and handling conditions.
RefSeq:	<a href="#">NP_001494</a>



[View online >](#)

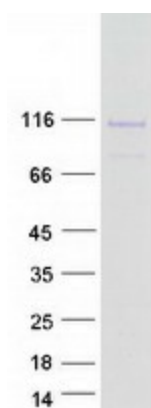
RefSeq Size:	3489
RefSeq ORF:	2520
Synonyms:	GPIPLD; GPIPLDM; PIGPLD; PIGPLD1; PLD
Locus ID:	2822
UniProt ID:	<a href="#">P80108</a>
Cytogenetics:	6p22.3

**Summary:** Many proteins are tethered to the extracellular face of eukaryotic plasma membranes by a glycosylphosphatidylinositol (GPI) anchor. The GPI-anchor is a glycolipid found on many blood cells. The protein encoded by this gene is a GPI degrading enzyme. Glycosylphosphatidylinositol specific phospholipase D1 hydrolyzes the inositol phosphate linkage in proteins anchored by phosphatidylinositol glycans, thereby releasing the attached protein from the plasma membrane. [provided by RefSeq, Jul 2008]

**Protein Families:** Druggable Genome, Secreted Protein

**Protein Pathways:** Glycosylphosphatidylinositol(GPI)-anchor biosynthesis

### Product images:



Coomassie blue staining of purified GPLD1 protein (Cat# [TP317578]). The protein was produced from HEK293T cells transfected with GPLD1 cDNA clone (Cat# [RC217578]) using MegaTran 2.0 (Cat# [TT210002]).