

## Product datasheet for PH317567

### KLC4 (NM\_201522) Human Mass Spec Standard

#### Product data:

Product Type:	Mass Spec Standards
Description:	KLC4 MS Standard C13 and N15-labeled recombinant protein (NP_958930)
Species:	Human
Expression Host:	HEK293
Expression cDNA Clone or AA Sequence:	RC217567
Predicted MW:	68.6 kDa
Protein Sequence:	>RC217567 protein sequence Red=Cloning site Green=Tags(s)

MSGLVLGQRDEPAGHRLSQEEILGSTRVLSQGLEALRSEHQAVLQSLSQTIIECLQQGGHEEGLVHEKARQ  
LRRSMENIELGLSEAQVMLALASHLSTVESEKQKLRAQVRRLLCQENQWLRDELQAGTQQRLQRSEQAVAQ  
EEEKHLLEFLGQLRQYDEGDGHTSEEKEGDATKDSLDDLPNEEEEDPSNGLSRQGATAAQGGYEIPAR  
LRTLHNLVIQYAAQGRYEVAVPLCKQALEDLERTSGRGHPDVATMLNILALVYRDQNKYEAAHLLNDAL  
SIRESTLGPDPHVAATLNNLAVLYGKRGKYKEAEPLCQRALEIREKVLGTNHPDVAKQLNLLALLCQNG  
GKYEAVERYYYQALAIYEGQLGPDNPNVARTKNNLASCYLKQGYAEAEETLYKEILTRAHVQEFSGVDD  
HKPIWMHAEEREEMSKSRHHEGGTPYAEYGGWYKACKVSSPTVNTTLRNLGALYRRQGLKLEAAETLEECA  
LRSRRQGTDPISQTKVAELLGESDGRRTSQEGPGDSVKFEGGEDASVAVEWSGDGSGTLQRSGLGKIRD  
VLRSSSELLVRKLQGTETPRPSSSNMKRAASLNLYLNQPSAAPLQVSRGLSASTMDLSSSS

TRTRPLEQKLISEEDLAANDILDYKDDDDKV

Tag:	C-Myc/DDK
Purity:	> 80% as determined by SDS-PAGE and Coomassie blue staining
Concentration:	>0.05 µg/µL as determined by microplate BCA method
Labeling Method:	Labeled with [U- <sup>13</sup> C <sub>6</sub> , <sup>15</sup> N <sub>4</sub> ]-L-Arginine and [U- <sup>13</sup> C <sub>6</sub> , <sup>15</sup> N <sub>2</sub> ]-L-Lysine
Buffer:	25 mM Tris-HCl, 100 mM glycine, pH 7.3
Storage:	Store at -80°C. Avoid repeated freeze-thaw cycles.
Stability:	Stable for 3 months from receipt of products under proper storage and handling conditions.
RefSeq:	<a href="#">NP_958930</a>
RefSeq Size:	2820
RefSeq ORF:	1857



[View online »](#)

**Synonyms:** bA387M24.3; KNSL8

**Locus ID:** 89953

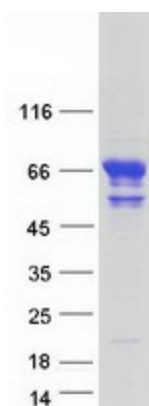
**UniProt ID:** [Q9NSK0](#), [A0A024RCZ8](#)

**Cytogenetics:** 6p21.1

**Summary:** Kinesin is a microtubule-associated force-producing protein that may play a role in organelle transport. The light chain may function in coupling of cargo to the heavy chain or in the modulation of its ATPase activity (By similarity).[UniProtKB/Swiss-Prot Function]

**Protein Families:** Druggable Genome

### Product images:



Coomassie blue staining of purified KLC4 protein (Cat# [TP317567]). The protein was produced from HEK293T cells transfected with KLC4 cDNA clone (Cat# [RC217567]) using MegaTran 2.0 (Cat# [TT210002]).