

Product datasheet for PH317513

MTCP1 (NM_001018025) Human Mass Spec Standard

Product data:

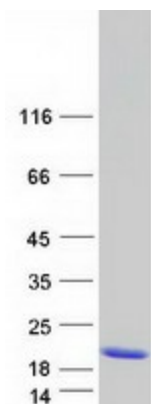
Product Type:	Mass Spec Standards
Description:	MTCP1 MS Standard C13 and N15-labeled recombinant protein (NP_001018025)
Species:	Human
Expression Host:	HEK293
Expression cDNA Clone or AA Sequence:	RC217513
Predicted MW:	12.4 kDa
Protein Sequence:	>RC217513 representing NM_001018025 Red =Cloning site Green =Tags(s) MAGEDVGGAPPDHLVWHQEGIYRDEYQRTWVAVVEETSFLRARVQQIQVPLGDAARPSHLLTSQLPLMWQ LYPEERYMDNNSRLWQIQHMLMVRGVQELLLKLLPDD TR TRPLEQKLISEEDLAANDILDYKDDDDKV
Tag:	C-Myc/DDK
Purity:	> 80% as determined by SDS-PAGE and Coomassie blue staining
Concentration:	>0.05 µg/µL as determined by microplate BCA method
Labeling Method:	Labeled with [U- 13C6, 15N4]-L-Arginine and [U- 13C6, 15N2]-L-Lysine
Buffer:	25 mM Tris-HCl, 100 mM glycine, pH 7.3
Storage:	Store at -80°C. Avoid repeated freeze-thaw cycles.
Stability:	Stable for 3 months from receipt of products under proper storage and handling conditions.
RefSeq:	NP_001018025
RefSeq Size:	1943
RefSeq ORF:	321
Synonyms:	p8MTCP1; P13MTCP1; TCL1C
Locus ID:	4515
UniProt ID:	P56278
Cytogenetics:	Xq28



[View online »](#)

Summary:

This gene was identified by involvement in some t(X;14) translocations associated with mature T-cell proliferations. This region has a complex gene structure, with a common promoter and 5' exon spliced to two different sets of 3' exons that encode two different proteins. This gene represents the upstream 13 kDa protein that is a member of the TCL1 family. This protein may be involved in leukemogenesis. [provided by RefSeq, Mar 2009]

Product images:

Coomassie blue staining of purified MTCP1 protein (Cat# [TP317513]). The protein was produced from HEK293T cells transfected with MTCP1 cDNA clone (Cat# [RC217513]) using MegaTran 2.0 (Cat# [TT210002]).