

Product datasheet for PH317462

RSC1A1 (NM_006511) Human Mass Spec Standard

Product data:

Product Type:	Mass Spec Standards
Description:	RSC1A1 MS Standard C13 and N15-labeled recombinant protein (NP_006502)
Species:	Human
Expression Host:	HEK293
Expression cDNA Clone or AA Sequence:	RC217462
Predicted MW:	66.6 kDa
Protein Sequence:	>RC217462 representing NM_006511 Red=Cloning site Green=Tags(s)

MSSLPTSDGFNHPARSSGQSPDVGNPMSLARSVSASVCPKPSDSRIEPKAVKALKASAEFQLNSEKKE
HLSLQDLSDHASSADHAPTDQSPAMPQNSSEEITVAGNLEKSAERSTQGLKFHLHTRQEASLSVTSTRM
HEPQMFLGEKDWHPENQNLQVSDPQQHEEPGNEQEVAQQKASHDQEYLCNIGDLELPEERQQNQHKIV
DLEATMKGNGLPQNVDPSPSAKKSIPSSSECSGCSNSETFMEIDTAQQSLVTLNSTGRQNAVKNIGALDL
TLDNPLMEVETSKCNPSSEILNDSISTQDLQPPETNVEIPGTNKEYGHYSSPSLCGSCQPSVESAEESCP
SITAALKELHELLVSSKPASENTSEEVICQSETIAEGQTSIKDLSEWRTQNEHLTQNEQCPQVSFHQAI
SVSVETEKLTGTSSDTGREAVENVNFRSLGDGLSTDKEGVPKSRESINKNRSVTVTSAKTSNQLHCTLGV
EISPKLLAGEEDALNQTSEQTKSLSSNFILVKDLGQGIQNSVTDRPETRENVCPDASRPLLEYEPPTSHP
SSSPAILPPLIFPATDIDRILRAGFTLQEALGALHRVGGNADLALLVLLAKNIVVPT

TRTRPLEQKLISEEDLAANDILDYKDDDDKV

Tag:	C-Myc/DDK
Purity:	> 80% as determined by SDS-PAGE and Coomassie blue staining
Concentration:	>0.05 µg/µL as determined by microplate BCA method
Labeling Method:	Labeled with [U- ¹³ C ₆ , ¹⁵ N ₄]-L-Arginine and [U- ¹³ C ₆ , ¹⁵ N ₂]-L-Lysine
Buffer:	25 mM Tris-HCl, 100 mM glycine, pH 7.3
Storage:	Store at -80°C. Avoid repeated freeze-thaw cycles.
Stability:	Stable for 3 months from receipt of products under proper storage and handling conditions.
RefSeq:	NP_006502
RefSeq Size:	1854
RefSeq ORF:	1851

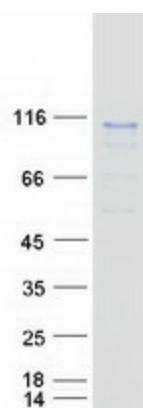


[View online »](#)

Synonyms:	RS1
Locus ID:	6248
UniProt ID:	<u>Q92681</u>
Cytogenetics:	1p36.21
Summary:	The protein encoded by this intronless gene inhibits the expression of the solute carrier family 5 (sodium/glucose cotransporter), member 1 gene (SLC5A1) and downregulates exocytosis of the SLC5A1 protein. The encoded protein is sometimes found coating the trans-Golgi network and other times is localized to the nucleus, depending on the cell cycle stage. This protein also inhibits the expression of solute carrier family 22 (organic cation transporter), member 2 (SLC22A2). [provided by RefSeq, Dec 2015]

Protein Families: Druggable Genome

Product images:



Coomassie blue staining of purified RSC1A1 protein (Cat# [TP317462]). The protein was produced from HEK293T cells transfected with RSC1A1 cDNA clone (Cat# [RC217462]) using MegaTran 2.0 (Cat# [TT210002]).