

Product datasheet for PH317456

INTS1 (NM_001080453) Human Mass Spec Standard

Product data:

Product Type:	Mass Spec Standards
Description:	INTS1 MS Standard C13 and N15-labeled recombinant protein (NP_001073922)
Species:	Human
Expression Host:	HEK293
Expression cDNA Clone or AA Sequence:	RC217456
Predicted MW:	244.7 kDa



[View online »](#)

Protein Sequence: >RC217456 representing NM_001080453
 Red=Cloning site Green=Tags(s)

MNRAKPTTVRRPSAAAKPSGHPGGDFIALGSKGQANESKTASTLLKPAPSGLPSEKRDRAAAAALSSASA
 LTGLTKRPKLSSTPPLSALGRLAEAAVAEKRAISPSIKEPSVVPVIEVLPVLLDEIEAAELEGNDRIEG
 VLCGAVKQLKVTRAKPDSTLYLSMYLAKIKPNIFATEGVIEALCSLLRRDASINFKAKGNSLVSVLACN
 LLMAAYEEDENWPEIFVKVYIEDSLGERIWDVSPHCKTFVDNIQTAFNTRMPPRSVLLQGEAGRVAGDLG
 AGSSPHPSLTHEEDSQTELLIAEEKLSPEQEGQLMPRYEELAESVEEYVLDMLRDQLNRRQPIDNVSRLN
 LRLLTSTCGYKEVRLLAHQKLEMMWLQNPKLTRPAQDLLMSVCMNCNTHGSEDMVDVISHLIKIRLKPVLL
 NHFMLCIRELLSAHKDNLGTTIKLVIFNELSSARNPNMQVLYTALQHSSELAPKFLAMVFQDILLTKND
 YLRASRALLREIKQTKHEINFQAFCLGLMQRKEPQYLEMEFKERFVVHITDVLAVSMLGITAQVKEA
 GIAWDKGEKRNLEVLRSFQNIQAAIQRDVWVWLVVPSISKLAPKDYVHCHLVLFTEQPEYTKWVNDW
 PPESDRNFFLRLCSEVPILEDLMLRILVIGLSRELPLGPADAMELADHLVKRAAAVQADDVEVLKVGRTQ
 LIDAVLNLCTYHHPENIQLPPGYQPPNLAISTLYWKAWPLLLVAAFNPENIGLAWEEYPTLKMMLMEMV
 MTNNYSYPPCTLTDEETRTEMLNRELQTAQREKQEILAFEGHLLAASTKQITITESSLLLSQLTSLDPQG
 PRRRPPPHILDQVKSLSLRLGHLPCRNRPDFLLHIQQRASSQSMPWADLVQSSSEGLDVLVQVCL
 CEFLLHDAVDDAASGEEDDEGESKEQKAKKRQRQKQRLGRLQDILLGPKADEQTTCEVLDYFLRRLG
 SSQVARSVLAMKGLSLVSEGLRDGEEKEPMEEDVGDVLDVQGYQWLLRDLRPLPFDVSRSTTALAL
 QQA IHMETDPQTI SAYL IYLSQHTPVVEEQAHSDALDVARLVVERSTIMSHLFSKLSPSAASDAVLSAL
 LSIFSRVYRRMRQSKGEEVYSWSESQDQVFLRWSSGETATMHILVVHAMVILLTLGPPRADDSEFQALL
 DIWFPEEKPLPTAFLVDTSEEALLLPDWLKLRMIRSEVLRVDAALQDLEPQQLLQVQSFQIPVSSMSK
 LLQFLDQAVAHDPQTLEQNIMDKNYMAHLVEVQHERGASGGQTFHSLLTASLPPRRDSTEAPKPKSSPEQ
 PIGQGRIRVGTQLRVLGPEDDLAGMFLQIFPLSPDPRWQSSSPRPVALALQALGQELARVVQGSPEVPG
 ITVRVLQALATLLSSPHGGALVMSMHRSHFLACPLLRLQLCQYQRCVPQDTGFSFLKVLQMLQWLDSP
 GVEGGPLRAQLRLASQASAGRRLSDVRGGLRLAEALAFRQDLEVVSSTVRAVIATLRSGEQCSVEPDL
 ISKVLQGLIEVRSPLHEELLTAFFSATADAASPFPAKPVVVVSSLLQEEEEPLAGGKPGADGGSLEAVR
 LGPSSGLLDVWLEMLDPEVVSSCPDLQRLRFRSRKGGKQAQVPSFRPYLLTLFTHQSSWPTLHQCIRVL
 LGKSREQRFDPSASLDFLWACIHPRIWQGRDQRTQKRREELVLRVQGPVILVELILAEATRSQDG
 DTAACSLIQARLPLLLSCCGDDESVRKVTEHLSGCIQQWGSVLRRCRDLQLYLQRPVLPVPEV
 LLHSEGAASSVCKLDGLIHRFITLLADTSDSRALENRGADASMCRKLAVAHPLLLLRHLPMAIALLHG
 RTHLNFQEFRRQNHLSFHLVGLLELQPHVFRSEHQGALWDCLLSFIRLLLNRYKSSRHAAFINKFV
 QFIHKYITYNAPAAISFLQKHADPLHDLSDNSDLVMLKSLLAGLSLPSRDDRTDRGLDEEGEESSAGS
 LPLVSVSLFTPLTAAEMAPYMKRLSRGQTVEDLLEVLSDIDEMSRRRPEILSFFSTNLQRLMSSAECCR
 NLAFLSALRSMQNSPSIAAFLPTFMYCLGSQDFEVVQATLRNLPEYALLCQEAHAVLLHRAFLVGMYGQ
 MDPSAQISEALRILHMEAVM

TRTRPLEQKLI SEEDLAANDILDYKDDDDKV

Tag: C-Myc/DDK

Purity: > 80% as determined by SDS-PAGE and Coomassie blue staining

Concentration: >0.05 µg/µL as determined by microplate BCA method

Labeling Method: Labeled with [U- 13C6, 15N4]-L-Arginine and [U- 13C6, 15N2]-L-Lysine

Buffer: 25 mM Tris-HCl, 100 mM glycine, pH 7.3

Storage: Store at -80°C. Avoid repeated freeze-thaw cycles.

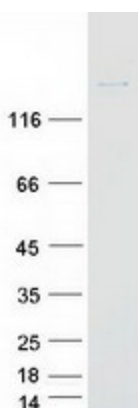
Stability: Stable for 3 months from receipt of products under proper storage and handling conditions.

RefSeq: [NP_001073922](#)

RefSeq Size: 7000

RefSeq ORF:	6570
Synonyms:	INT1; NDCAGF; NET28
Locus ID:	26173
UniProt ID:	Q8N201
Cytogenetics:	7p22.3
Summary:	INTS1 is a subunit of the Integrator complex, which associates with the C-terminal domain of RNA polymerase II large subunit (POLR2A; MIM 180660) and mediates 3-prime end processing of small nuclear RNAs U1 (RNU1; MIM 180680) and U2 (RNU2; MIM 180690) (Baillat et al., 2005 [PubMed 16239144]).[supplied by OMIM, Mar 2008]

Product images:



Coomassie blue staining of purified INTS1 protein (Cat# [TP317456]). The protein was produced from HEK293T cells transfected with INTS1 cDNA clone (Cat# [RC217456]) using MegaTran 2.0 (Cat# [TT210002]).