

Product datasheet for PH317448

MAP4K3 (NM_003618) Human Mass Spec Standard

Product data:

Product Type:	Mass Spec Standards
Description:	MAP4K3 MS Standard C13 and N15-labeled recombinant protein (NP_003609)
Species:	Human
Expression Host:	HEK293
Expression cDNA Clone or AA Sequence:	RC217448
Predicted MW:	101.1 kDa
Protein Sequence:	>RC217448 representing NM_003618 Red=Cloning site Green=Tags(s)

MNPGFDLSRRNPQEDFELIQRIGSGTYGDVYKARNVNTGELAAIKVIKLEPGEDFAVVQOEIIMMKDCKH
PNIVAYFGSYLRDRLWICMEFCGGSLQDIYHVTGPLSELQIAYVSRETLQGLYYLHSGKGMHRDIKGA
NILLTDNGHVKLADFGVSAQITATIARKKSFIGTPYWMAPEVAVERKGGYNQLCDLWAVGITAIELAE
QPPMFDLHPMRALFLMTKSNFQPPKLDKMKWSNSFHVFVKMALTKNPKKRPTAEKLLQHPFVTQHLTRS
LAIELLDKVNNDHSTYHDFDDDDPEPLVAVPHRIHSTSRNVREEKTRSEITFGQVKFDPPLRKETEPHH
ELPDSGDGLDSSEEIYYTARSNLDLQLEYGQGHQGGYFLGANKSLLKSVEEELHQRGHVAHLEDDGDD
ESKHSTLKAKIPPPLPPKPKSIFIPQEMHSTEDENQGTIKRCPMSGSPAKPSQVPPRPPPPRLPPHKPVA
LNGMSSFQNLNGERDGSQCQQNEHRGTNLSRKEKDVPKPISNGLPPTPKVHMGACFSKVFNGCPLKIH
CASSWINPDTRDQYLIFGAEIYTLNLSHETSMELFPRRCTLWYVMNCLLSISGKASQLYSHNLP
GLFDYARQMQLPVAIPAHKLPDRILPRKFSVSAKIPETKWCQKCCVVRNPYTGHKYLCGALQTSIVLLE
WVEPMQKFMILKIHIDFPIPCPLRMFEMLVVPEQEYPLVCVGVSRGRDFNQVRFETVNPNSTSSWFTE
TPQTNVHTVTLERDITLVCLDCCIKIVNLQGRLLKSSRKLSELTFDFQIESIVCLQDSVLAFWKHGMQ
RSFRSNEVTQEISDSTRIFRLLGSDRVVLESRPTDNPTANSNLYILAGHENS

TRTRPLEQKLISEEDLAANDILDYKDDDDKV

Tag:	C-Myc/DDK
Purity:	> 80% as determined by SDS-PAGE and Coomassie blue staining
Concentration:	>0.05 µg/µL as determined by microplate BCA method
Labeling Method:	Labeled with [U- ¹³ C ₆ , ¹⁵ N ₄]-L-Arginine and [U- ¹³ C ₆ , ¹⁵ N ₂]-L-Lysine
Buffer:	25 mM Tris-HCl, 100 mM glycine, pH 7.3
Storage:	Store at -80°C. Avoid repeated freeze-thaw cycles.
Stability:	Stable for 3 months from receipt of products under proper storage and handling conditions.



[View online »](#)

RefSeq: [NP_003609](#)

RefSeq Size: 4141

RefSeq ORF: 2682

Synonyms: GLK; MAPK3; MEK3; MEK3; RAB8IP1

Locus ID: 8491

UniProt ID: [Q8IVH8](#), [B3KMM5](#), [A8K602](#)

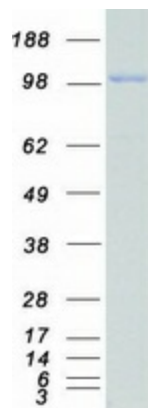
Cytogenetics: 2p22.1

Summary: This gene encodes a member of the mitogen-activated protein kinase kinase kinase family. The encoded protein activates key effectors in cell signalling, among them c-Jun. Alternatively spliced transcripts encoding multiple isoforms have been observed for this gene. [provided by RefSeq, Jul 2012]

Protein Families: Druggable Genome, Protein Kinase

Protein Pathways: MAPK signaling pathway

Product images:



Coomassie blue staining of purified MAP4K3 protein (Cat# [TP317448]). The protein was produced from HEK293T cells transfected with MAP4K3 cDNA clone (Cat# [RC217448]) using MegaTran 2.0 (Cat# [TT210002]).