

Product datasheet for PH317447

HFE (NM_000410) Human Mass Spec Standard

Product data:

Product Type:	Mass Spec Standards
Description:	HFE MS Standard C13 and N15-labeled recombinant protein (NP_000401)
Species:	Human
Expression Host:	HEK293
Expression cDNA Clone or AA Sequence:	RC217447
Predicted MW:	40.11 kDa
Protein Sequence:	>RC217447 representing NM_000410 Red=Cloning site Green=Tags(s) MGPRARPALLLLMLLQTAVLQGRLLRSHSLHYLFMGASEQDLGLSLFEALGYVDDQLFVFDHESRRVEP RTPWSSRISSQMWLQLSLSKGDHMFVDFWTIMENHNHNSKESHTLQVILGCEMQEDNSTEGYWKYGY DGQDHLEFCPDTLDWRAAEPRAWPTKLEWERHKIRARQNRAYLERDQPAQLQQLLELGRGVLDDQVPLV KVTHHVTSSVTTLRALNYYPNITMKWLKDKQPMDAKEFEPKDVLPNGDGTYYQWITLAVPPGEEQRY TCQVEHPGLDQPLIWIWEPSPSGTLVIGVISGIAVFFVILFIGILFIILRKRQGSRGAMGHYVLAERE TRTRPLEQKLISEEDLAANDILDYKDDDDKV
Tag:	C-Myc/DDK
Purity:	> 80% as determined by SDS-PAGE and Coomassie blue staining
Concentration:	>0.05 µg/µL as determined by microplate BCA method
Labeling Method:	Labeled with [U- ¹³ C ₆ , ¹⁵ N ₄]-L-Arginine and [U- ¹³ C ₆ , ¹⁵ N ₂]-L-Lysine
Buffer:	25 mM Tris-HCl, 100 mM glycine, pH 7.3
Storage:	Store at -80°C. Avoid repeated freeze-thaw cycles.
Stability:	Stable for 3 months from receipt of products under proper storage and handling conditions.
RefSeq:	<u>NP_000401</u>
RefSeq Size:	2727
RefSeq ORF:	1044
Synonyms:	HFE1; HH; HLA-H; MVCD7; TFQTL2
Locus ID:	3077



[View online »](#)

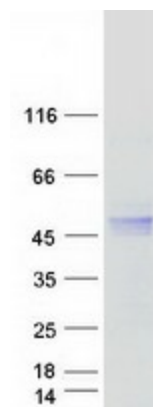
UniProt ID: [Q30201](#)

Cytogenetics: 6p22.2

Summary: The protein encoded by this gene is a membrane protein that is similar to MHC class I-type proteins and associates with beta2-microglobulin (beta2M). It is thought that this protein functions to regulate iron absorption by regulating the interaction of the transferrin receptor with transferrin. The iron storage disorder, hereditary haemochromatosis, is a recessive genetic disorder that results from defects in this gene. At least nine alternatively spliced variants have been described for this gene. Additional variants have been found but their full-length nature has not been determined. [provided by RefSeq, Jul 2008]

Protein Families: Druggable Genome, Transmembrane

Product images:



Coomassie blue staining of purified HFE protein (Cat# [TP317447]). The protein was produced from HEK293T cells transfected with HFE cDNA clone (Cat# [RC217447]) using MegaTran 2.0 (Cat# [TT210002]).