

Product datasheet for PH317435

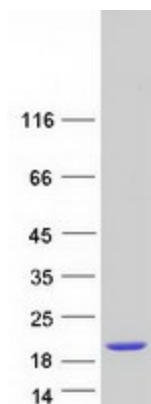
CCDC153 (NM_001033658) Human Mass Spec Standard

Product data:

Product Type:	Mass Spec Standards
Description:	CCDC153 MS Standard C13 and N15-labeled recombinant protein (NP_001028830)
Species:	Human
Expression Host:	HEK293
Expression cDNA Clone or AA Sequence:	RC217435
Predicted MW:	13.9 kDa
Protein Sequence:	>RC217435 representing NM_001033658 Red=Cloning site Green=Tags(s) MSRQCHALQEDMQTHSKQLEEEVKGLRGQLEACQREAAAAREEAEQALGERDQALAQ LRAHMADMEAKYE EILHDSLDRLLAKLRAIKQQWDGAALRLHARHKEQQRQFGLTPPGSLRPPAPSL TRTRPLEQKLISEEDLAANDILDYKDDDDKV
Tag:	C-Myc/DDK
Purity:	> 80% as determined by SDS-PAGE and Coomassie blue staining
Concentration:	>0.05 µg/µL as determined by microplate BCA method
Labeling Method:	Labeled with [U- 13C6, 15N4]-L-Arginine and [U- 13C6, 15N2]-L-Lysine
Buffer:	25 mM Tris-HCl, 100 mM glycine, pH 7.3
Storage:	Store at -80°C. Avoid repeated freeze-thaw cycles.
Stability:	Stable for 3 months from receipt of products under proper storage and handling conditions.
RefSeq:	NP_001028830
RefSeq Size:	625
RefSeq ORF:	372
Synonyms:	coiled-coil domain containing 153; MGC125447; MGC125447, MGC125448; MGC125448
Locus ID:	283152
UniProt ID:	Q494R4
Cytogenetics:	11q23.3



[View online »](#)

Product images:

Coomassie blue staining of purified CCDC153 protein (Cat# [TP317435]). The protein was produced from HEK293T cells transfected with CCDC153 cDNA clone (Cat# [RC217435]) using MegaTran 2.0 (Cat# [TT210002]).