

## Product datasheet for PH317404

### RASSF2 (NM\_170774) Human Mass Spec Standard

#### Product data:

Product Type:	Mass Spec Standards
Description:	RASSF2 MS Standard C13 and N15-labeled recombinant protein (NP_739580)
Species:	Human
Expression Host:	HEK293
Expression cDNA Clone or AA Sequence:	RC217404
Predicted MW:	37.8 kDa
Protein Sequence:	>RC217404 protein sequence Red=Cloning site Green=Tags(s)

MDYSHQTSLVPCGQDKYISKNELLLHLKTYNLYYEGQNLQLRHREEDEFIVEGLLNISWGLRRPIRLQM  
QDDNERIRPPSSSSWHSGCNLGAQTTLKPLTVPKVQISEVDAPPEGDQMPSSSTDSRGLKPLQEDTPQL  
MRTRSDVGVRRRGNVVRTPSDQRRIRRRHRSINGHFYNHKT SVFTPAYGSVTNVRINSTMTTPQVLKLLLN  
KFKIENSAAEFALYVVHTSGEKQKLKATDYPLIARILQGPCEQISKVFLMEKDQVEEVTYDVAQYIKFEM  
PVLKSFQIKLQEEEDREVKKLMRKYTVLRLMIRQRLEEIAETPATI

TRTRPLEQKLISEEDLAANDILDYKDDDDKV

Tag:	C-Myc/DDK
Purity:	> 80% as determined by SDS-PAGE and Coomassie blue staining
Concentration:	>0.05 µg/µL as determined by microplate BCA method
Labeling Method:	Labeled with [U- <sup>13</sup> C <sub>6</sub> , <sup>15</sup> N <sub>4</sub> ]-L-Arginine and [U- <sup>13</sup> C <sub>6</sub> , <sup>15</sup> N <sub>2</sub> ]-L-Lysine
Buffer:	25 mM Tris-HCl, 100 mM glycine, pH 7.3
Storage:	Store at -80°C. Avoid repeated freeze-thaw cycles.
Stability:	Stable for 3 months from receipt of products under proper storage and handling conditions.
RefSeq:	<u><a href="#">NP_739580</a></u>
RefSeq Size:	5307
RefSeq ORF:	978
Synonyms:	CENP-34; RASFADIN
Locus ID:	9770



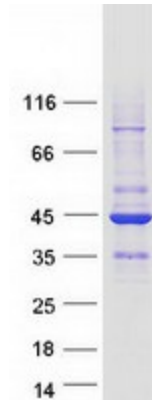
[View online »](#)

UniProt ID: [P50749](#)

Cytogenetics: 20p13

Summary: This gene encodes a protein that contains a Ras association domain. Similar to its cattle and sheep counterparts, this gene is located near the prion gene. Two alternatively spliced transcripts encoding the same isoform have been reported. [provided by RefSeq, Jul 2008]

### Product images:



Coomassie blue staining of purified RASSF2 protein (Cat# [TP317404]). The protein was produced from HEK293T cells transfected with RASSF2 cDNA clone (Cat# [RC217404]) using MegaTran 2.0 (Cat# [TT210002]).