

Product datasheet for PH317403

Salivary alpha amylase (AMY1A) (NM_004038) Human Mass Spec Standard

Product data:

Product Type:	Mass Spec Standards
Description:	AMY1A MS Standard C13 and N15-labeled recombinant protein (NP_004029)
Species:	Human
Expression Host:	HEK293
Expression cDNA Clone or AA Sequence:	RC217403
Predicted MW:	57.8 kDa
Protein Sequence:	>RC217403 representing NM_004038 Red=Cloning site Green=Tags(s)

MKLFWLLFTIGFCWAQYSSNTQQGRTSIVHLFEWRWVDIALECERYLAPKGGVQVSPNENVAIHNPFRPWERYQPVSYKLCSTRSGNEDEFNMVTRCANNVGVRIYVDAVINHMCNAVSAGTSSTCGSYFNPGRDFPAVPYSGWDFNDGKCKTGSGDIENYNDATQVRDRLSGLLDLALGKDYVRSKIAEYMNHLIDIGVAGFRIDASKHMWPGDIKAILDKLHNLNSNWFPEGSKPFYIQEVIDLGGEPKSSDYFGNGRVTEFKYGAKLGTVIRKWNGEKMSYLKNWGEWGFMPSDRALVFDNHDNRQGHGAGGASILTFWDARLYKMAVGFMLAHPYGFTRVMSSYRWPYFENGKDVNDWVGPPNDNGVTKEVTINPDTTCGNDWVCEHRWRQIRNMVFNFRNVVDGQPFNTNWDNGSNQVAFGRGNRGI VFNNDWTFSLTLQTGLPAGTYCDVISGDKINGNCTGIKIYVSDDGKAHFSISNSAEDPFI A IHAESKL

TRTRPLEQKLISEEDLAANDILDYKDDDDKV

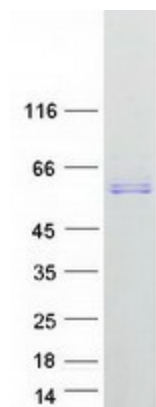
Tag:	C-Myc/DDK
Purity:	> 80% as determined by SDS-PAGE and Coomassie blue staining
Concentration:	>0.05 µg/µL as determined by microplate BCA method
Labeling Method:	Labeled with [U- 13C6, 15N4]-L-Arginine and [U- 13C6, 15N2]-L-Lysine
Buffer:	25 mM Tris-HCl, 100 mM glycine, pH 7.3
Storage:	Store at -80°C. Avoid repeated freeze-thaw cycles.
Stability:	Stable for 3 months from receipt of products under proper storage and handling conditions.
RefSeq:	<u>NP_004029</u>
RefSeq Size:	1862
RefSeq ORF:	1533



[View online »](#)

Synonyms:	AMY1
Locus ID:	276
UniProt ID:	P04745 , Q6NSB3
Cytogenetics:	1p21.1
Summary:	Amylases are secreted proteins that hydrolyze 1,4-alpha-glucoside bonds in oligosaccharides and polysaccharides, and thus catalyze the first step in digestion of dietary starch and glycogen. The human genome has a cluster of several amylase genes that are expressed at high levels in either salivary gland or pancreas. This gene encodes an amylase isoenzyme produced by the salivary gland. Alternative splicing results in multiple transcript variants encoding the same protein. [provided by RefSeq, Jul 2008]
Protein Families:	ES Cell Differentiation/IPS, Secreted Protein
Protein Pathways:	Metabolic pathways, Starch and sucrose metabolism

Product images:



Coomassie blue staining of purified AMY1A protein (Cat# [TP317403]). The protein was produced from HEK293T cells transfected with AMY1A cDNA clone (Cat# [RC217403]) using MegaTran 2.0 (Cat# [TT210002]).