

Product datasheet for PH317387

ITGB6 (NM_000888) Human Mass Spec Standard

Product data:

Product Type:	Mass Spec Standards
Description:	ITGB6 MS Standard C13 and N15-labeled recombinant protein (NP_000879)
Species:	Human
Expression Host:	HEK293
Expression cDNA Clone or AA Sequence:	RC217387
Predicted MW:	85.8 kDa
Protein Sequence:	>RC217387 representing NM_000888 Red=Cloning site Green=Tags(s)

MGIELLCLFFLFLGRNDHVQGGCALGGAETCEDCLLIGPQCAWCAQENFTHPSGVGERCDTPANLLAKGC
QLNFIENPVSQVEILKNKPLSVGRQKNSSDIVQIAPQSLILKLRPGGAQTLQVHVRQTEDYPVDLYYLM
LSASMDLNTIKELGSRLSKEMSKLTSNFRFGFVVEKPVSPFVKTTPEEIANPCSSIPYFCLPTFGF
KHILPLTNDARFNEIVKNQKISANIDTPEGGFDAIMQAAVCKEIKGWRNDSLHLLVFSADSHFGMDS
KLAGIVIPNDGLCHLDSKNEYSMSTVLEYPTIGQLIDKLVQNNVLLIFAVTQEQVHL YENYAKLIPGATV
GLLQKDSGNILQLIISAYEELRSEVELEVLGDTEGLNLSFTAICNNGTLFQHKKCSHMKVGD TASFSVT
VNIPHCERRSRHIIKPVGLGDALELLVSPECNDCQKEVEVNSSKCHHGNGSFQCGVCACHPGHMGPRC
ECGEDMLSTDSCKEAPDHPSCSGRGDCYCGQCICHLSPYGNIIYGPYCQCDNFSCVRHKGLLGGNGDCDC
GECVCRSGWTGEYCNCCTTSDSCVSEDGVLCSGRGDCVCGKCVCTNPGASGPTCERCPTCGDPCNSKRSC
IECHLSAAGQAREECVDKCKLAGATISEEEDFSKDGSVCSLQGENECLITFLITTDNEGKTI IHSINEK
DCPKPPNIPMIMLVSLAILLIGVVLLCIWKLVSFHDRKEVAKFEAERSKAKWQTGNPLYRGSTSTFK
NVTYKHREKQKVDLSTDC

TRTRPLEQKLI SEEDLAANDILDYKDDDDKV

Tag:	C-Myc/DDK
Purity:	> 80% as determined by SDS-PAGE and Coomassie blue staining
Concentration:	>0.05 µg/µL as determined by microplate BCA method
Labeling Method:	Labeled with [U- ¹³ C ₆ , ¹⁵ N ₄]-L-Arginine and [U- ¹³ C ₆ , ¹⁵ N ₂]-L-Lysine
Buffer:	25 mM Tris-HCl, 100 mM glycine, pH 7.3
Storage:	Store at -80°C. Avoid repeated freeze-thaw cycles.
Stability:	Stable for 3 months from receipt of products under proper storage and handling conditions.
RefSeq:	NP_000879



[View online »](#)

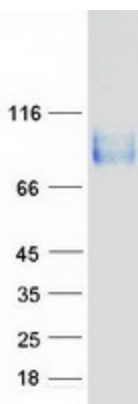
RefSeq Size:	2397
RefSeq ORF:	2364
Synonyms:	A11H
Locus ID:	3694
UniProt ID:	P18564
Cytogenetics:	2q24.2

Summary: This gene encodes a protein that is a member of the integrin superfamily. Members of this family are adhesion receptors that function in signaling from the extracellular matrix to the cell. Integrins are heterodimeric integral membrane proteins composed of an alpha chain and a beta chain. The encoded protein forms a dimer with an alpha v chain and this heterodimer can bind to ligands like fibronectin and transforming growth factor beta 1. Alternate splicing results in multiple transcript variants. [provided by RefSeq, Sep 2013]

Protein Families: Druggable Genome, Transmembrane

Protein Pathways: Arrhythmogenic right ventricular cardiomyopathy (ARVC), Dilated cardiomyopathy, ECM-receptor interaction, Focal adhesion, Hypertrophic cardiomyopathy (HCM), Regulation of actin cytoskeleton

Product images:



Coomassie blue staining of purified ITGB6 protein (Cat# [TP317387]). The protein was produced from HEK293T cells transfected with ITGB6 cDNA clone (Cat# [RC217387]) using MegaTran 2.0 (Cat# [TT210002]).