

Product datasheet for PH317329

TOMM20L (NM_207377) Human Mass Spec Standard

Product data:

| | |
|---------------------------------------|---|
| Product Type: | Mass Spec Standards |
| Description: | TOMM20L MS Standard C13 and N15-labeled recombinant protein (NP_997260) |
| Species: | Human |
| Expression Host: | HEK293 |
| Expression cDNA Clone or AA Sequence: | RC217329 |
| Predicted MW: | 17.5 kDa |
| Protein Sequence: | >RC217329 representing NM_207377 Red =Cloning site Green =Tags(s) MPSVRSLRLRLAAAAACGAF AFLGYCIYLNRRRGDPAFKRRLRDKRRAEPQKAEEQGTQLWDPTKNKKL QELFLQEVRMGELWLSRGEHRMGIQHLGNALLVCEQPRELLKVFKHTLPPKVFEMLLHKIPLICQQFEAD MNEQDCLEDDPD SGP TRTRRLE QKLI SEEDLAANDILDYKDDDDKV |
| Tag: | C-Myc/DDK |
| Purity: | > 80% as determined by SDS-PAGE and Coomassie blue staining |
| Concentration: | >0.05 µg/µL as determined by microplate BCA method |
| Labeling Method: | Labeled with [U- 13C6, 15N4]-L-Arginine and [U- 13C6, 15N2]-L-Lysine |
| Buffer: | 25 mM Tris-HCl, 100 mM glycine, pH 7.3 |
| Storage: | Store at -80°C. Avoid repeated freeze-thaw cycles. |
| Stability: | Stable for 3 months from receipt of products under proper storage and handling conditions. |
| RefSeq: | <u>NP_997260</u> |
| RefSeq Size: | 622 |
| RefSeq ORF: | 456 |
| Synonyms: | UNQ9438 |
| Locus ID: | 387990 |
| UniProt ID: | <u>Q6UXN7</u> |

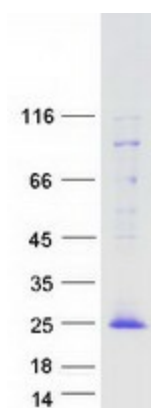


[View online »](#)

Cytogenetics: 14q23.1

Protein Families: Druggable Genome, Transmembrane

Product images:



Coomassie blue staining of purified TOMM20L protein (Cat# [TP317329]). The protein was produced from HEK293T cells transfected with TOMM20L cDNA clone (Cat# [RC217329]) using MegaTran 2.0 (Cat# [TT210002]).