

Product datasheet for PH317279

STATIP1 (ELP2) (NM_018255) Human Mass Spec Standard

Product data:

Product Type:	Mass Spec Standards
Description:	ELP2 MS Standard C13 and N15-labeled recombinant protein (NP_060725)
Species:	Human
Expression Host:	HEK293
Expression cDNA Clone or AA Sequence:	RC217279
Predicted MW:	92.3 kDa
Protein Sequence:	>RC217279 representing NM_018255 Red=Cloning site Green=Tags(s)

MVAPVLETSHVFCPPNRVRGVLNWSSGPRGLLAFGTSCSVVLYDPLKRVVVTNLNGHTARVNCIQWICKQ
DGSPSTELVSGGSDNQVIHWEIEDNQLLKAVHLQHGEPVYAVHAVYQRRRTSDPALCTLIIVSAAADSAVR
LWSKKGPEVMCLQTLNFGNGFALALCLSFNPNTDVPILACGNDDCRIHIFAQQNDQFQKVLSLCGHEDWI
RGVEWAAFGRDLFLASCSQDCLIRIWKLYIKSTSLETQDDDNIRLKENTFTIENESVKIAFVLTLETVLA
GHENWVNAVHWQPVFYKDGVLQQPVRLLSASMDKTMILWAPDEESGVWLEQVRVGEVGGNTLGFYDCQFN
EDGSMIIAHAFHGALHLWKQNTVNPREWTPDIVISGHFDGVQDLVWDPEGEFIIITVGTDQTTRLFAPWKR
KDQSQVTWHEIARPQIHGYDLKCLAMINRFQFVSGADEKVLRVFSAPRNFVENFCAITGQSLNHVLCNQD
SDLPEGATVPALGLSNKAVFQGDIASQPSDEEELLTSTGFYQQVAFQPSILTEPPTEDHLLQNTLWPEV
QKLYGHGYEIFCVTCNSSKTLASACKAAKKEHAAIILWNTTSWKQVQNLVFHSLTVTQMAFSPNEKFL
AVSRDRTWLSLWKKQDTISPEFEPVSLFAFTNKITSVHSRIIWSCDWSPDSKYFFFTGSRDKKVVVWGECD
STDDCIEHNIGPCSSVLDVGGAVTAVSVCPLHPSQRYVAVGLECGKICLYTWKKTQVPEINDWTHCV
ETSQSQSHTLAIRKLCWKNCSGKTEQKEAEGAEWLHFASCGEDHTVKIHRVNCAL

TRTRPLEQKLISEEDLAANDILDYKDDDDKV

Tag:	C-Myc/DDK
Purity:	> 80% as determined by SDS-PAGE and Coomassie blue staining
Concentration:	>0.05 µg/µL as determined by microplate BCA method
Labeling Method:	Labeled with [U- ¹³ C ₆ , ¹⁵ N ₄]-L-Arginine and [U- ¹³ C ₆ , ¹⁵ N ₂]-L-Lysine
Buffer:	25 mM Tris-HCl, 100 mM glycine, pH 7.3
Storage:	Store at -80°C. Avoid repeated freeze-thaw cycles.
Stability:	Stable for 3 months from receipt of products under proper storage and handling conditions.
RefSeq:	NP_060725

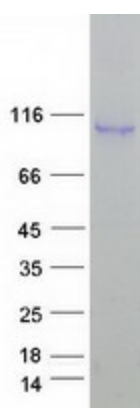


[View online >](#)

RefSeq Size:	2494
RefSeq ORF:	2478
Synonyms:	MRT58; SHINC-2; STATIP1; StIP
Locus ID:	55250
UniProt ID:	Q6IA86
Cytogenetics:	18q12.2

Summary: The protein encoded by this gene is a core subunit of the elongator complex, a histone acetyltransferase complex that associates with RNA polymerase II. In addition to histone acetylation, the encoded protein effects transcriptional elongation and may help remodel chromatin. [provided by RefSeq, May 2016]

Product images:



Coomassie blue staining of purified ELP2 protein (Cat# [TP317279]). The protein was produced from HEK293T cells transfected with ELP2 cDNA clone (Cat# [RC217279]) using MegaTran 2.0 (Cat# [TT210002]).