

## Product datasheet for PH317269

### C Reactive Protein (CRP) (NM\_000567) Human Mass Spec Standard

#### Product data:

Product Type:	Mass Spec Standards
Description:	CRP MS Standard C13 and N15-labeled recombinant protein (NP_000558)
Species:	Human
Expression Host:	HEK293
Expression cDNA Clone or AA Sequence:	RC217269
Predicted MW:	25 kDa
Protein Sequence:	<p>&gt;RC217269 protein sequence</p> <p>Red=Cloning site Green=Tags(s)</p> <p>MEKLLCFLVLTSLSHAFGQTDMSRKAFVFPKESDTSYVSLKAPLTKPLKAFTVCLHFYTELSSTRGYSIF            SYATKRQDNEILIFWSKDIGYSFTVGGSEILFEVPEVTAPVHICTSWESASGIVEFWVDGKPRVRKSLK            KGYTVGAEEASIIILGQEQDSFGNFEGSQLVGDIGNVNMWDFVLSPEINTIYLGPFSPNVLNWRALKY            EVQGEVFTKPQLWP</p> <p>TRTRPLEQKLISEEDLAANDILDYKDDDDKV</p>
Tag:	C-Myc/DDK
Purity:	> 80% as determined by SDS-PAGE and Coomassie blue staining
Concentration:	>0.05 µg/µL as determined by microplate BCA method
Labeling Method:	Labeled with [U- <sup>13</sup> C <sub>6</sub> , <sup>15</sup> N <sub>4</sub> ]-L-Arginine and [U- <sup>13</sup> C <sub>6</sub> , <sup>15</sup> N <sub>2</sub> ]-L-Lysine
Buffer:	25 mM Tris-HCl, 100 mM glycine, pH 7.3
Storage:	Store at -80°C. Avoid repeated freeze-thaw cycles.
Stability:	Stable for 3 months from receipt of products under proper storage and handling conditions.
RefSeq:	<a href="#">NP_000558</a>
RefSeq Size:	2024
RefSeq ORF:	672
Synonyms:	PTX1
Locus ID:	1401
UniProt ID:	<a href="#">P02741</a>

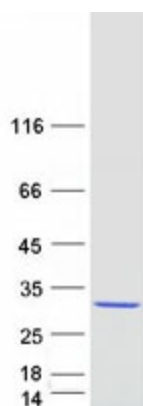

[View online »](#)

**Cytogenetics:** 1q23.2

**Summary:** The protein encoded by this gene belongs to the pentraxin family which also includes serum amyloid P component protein and pentraxin 3. Pentraxins are involved in complement activation and amplification via communication with complement initiation pattern recognition molecules, but also complement regulation via recruitment of complement regulators. The encoded protein has a calcium dependent ligand binding domain with a distinctive flattened beta-jellyroll structure. It exists in two forms as either a pentamer in circulation or as a nonsoluble monomer in tissues. It is involved in several host defense related functions based on its ability to recognize foreign pathogens and damaged cells of the host and to initiate their elimination by interacting with humoral and cellular effector systems in the blood. Consequently, the level of this protein in plasma increases greatly during acute phase response to tissue injury, infection, or other inflammatory stimuli. Elevated expression of the encoded protein is associated with severe acute respiratory syndrome coronavirus 2 (SARS&#8208;CoV&#8208;2) infection. [provided by RefSeq, Aug 2020]

**Protein Families:** Secreted Protein

### Product images:



Coomassie blue staining of purified CRP protein (Cat# [TP317269]). The protein was produced from HEK293T cells transfected with CRP cDNA clone (Cat# [RC217269]) using MegaTran 2.0 (Cat# [TT210002]).