

## Product datasheet for PH317265

### Integrin alpha E (ITGAE) (NM\_002208) Human Mass Spec Standard

#### Product data:

Product Type:	Mass Spec Standards
Description:	ITGAE MS Standard C13 and N15-labeled recombinant protein (NP_002199)
Species:	Human
Expression Host:	HEK293
Expression cDNA Clone or AA Sequence:	RC217265
Predicted MW:	130.12 kDa
Protein Sequence:	>RC217265 representing NM_002208 Red=Cloning site Green=Tags(s)

MWLFHTLLCIASLALLAAFNVDVAPWLPKGGAPFVLSLLHQDPSTNQTWLLVTSRPTKRTPGPLHRC  
SLVQDEILCHPVEHVPIPKGRHRGVTVVRSHHGVLICIQVLVRRPHLSSELGTGCSLLGPDLRPQAQAN  
FFDLENLLDPDARVDTGDCYSNKEGGEDDVNTARQRRALEKEEEEEDEEEEEAGTEIAIILDGS  
GSIDPPDFQRAKDFISNMMRNFEKCFECNFALVQYGGVIQTEFDLRDSQDVMSLARVQNTQVGSVTK  
TASAMQHVLDSIFTSSHGSRKASKVMVVLTDGGIFEDPLNLTTVINSPKMQGVERFAIGVGEEFKSART  
ARELNLIASDPDETHAFKVTNYMALDGLLSKLRNYIISMEGTVDALHYQLAQIGFSAQILDERQVLLGA  
VGAFDWSGGALLYDTRSRRGRFLNQTA AAAADAEEAAQYSYLGAVAVLHKTCSLSYVAGAPQYKHHGAVF  
ELQKEGREASFLPVLEGEQMGSYFGSELCPVDIDMDGSTDFLLVAAPFYHVHGEEGRVYVYRLSEQDGSF  
SLARILSGHPGFTNARFGFAMAAMGDSLQDKLTDVAIGAPLEGFADDGASFGSVYIYNGHWDGLSASPS  
QRIRASTVAPGLQYFGMSMAGGFDISGDGLADITVGTLGQAVVFRSRPVVRLKVSMAFTPSALPIGFNGV  
VNVRLCFEISSVTTASESGLREALLNFTLDVDVGKQRRRLQCSDVRSCLGCLREWSSGSQLEDLLMPT  
EGELCEEDCFSNASVKVSYQLQTPGQTDHPQPILDTRYTEPFAIFQLPYEKACKNKLFCVAELQLATTVS  
QQELVVGLTKELTLNINLTNSGEDSYMYSMALNYPRNLQLKRMQKPPSPNIQCDDPQPVASVLIIMNCRIG  
HPVLKRSSAHVSVVWQLEENAFPNRTADITVTVTNSNERRSLANETHTLQFRHGFVAVLSKPSIMYVNTG  
QGLSHHKEFLFHVHGENLFGAEYQLQICVPTKLRGLQVVAVKKLTRTQASTVCTWSQERACAYSSVQHVE  
EWHSVSCVIAADKENVTAAEISWDHSEELLKDVTELQILGEISFNKSLYEGNAENHRTKITVVFVKDE  
KYHSLPIIIKGSVGGLLVLIVILVILFKCGFFKRKYQQLNLESIRKAQLKSENLLLEEN

TRTRPLEQKLISEEDLAANDILDYKDDDDKV

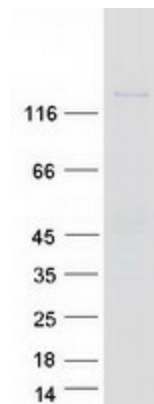
Tag:	C-Myc/DDK
Purity:	> 80% as determined by SDS-PAGE and Coomassie blue staining
Concentration:	>0.05 µg/µL as determined by microplate BCA method
Labeling Method:	Labeled with [U- <sup>13</sup> C <sub>6</sub> , <sup>15</sup> N <sub>4</sub> ]-L-Arginine and [U- <sup>13</sup> C <sub>6</sub> , <sup>15</sup> N <sub>2</sub> ]-L-Lysine
Buffer:	25 mM Tris-HCl, 100 mM glycine, pH 7.3



[View online >](#)

<b>Storage:</b>	Store at -80°C. Avoid repeated freeze-thaw cycles.
<b>Stability:</b>	Stable for 3 months from receipt of products under proper storage and handling conditions.
<b>RefSeq:</b>	<a href="#">NP_002199</a>
<b>RefSeq Size:</b>	3878
<b>RefSeq ORF:</b>	3537
<b>Synonyms:</b>	CD103; HUMINAE
<b>Locus ID:</b>	3682
<b>UniProt ID:</b>	<a href="#">P38570</a>
<b>Cytogenetics:</b>	17p13.2
<b>Summary:</b>	<p>Integrins are heterodimeric integral membrane proteins composed of an alpha chain and a beta chain. This gene encodes an I-domain-containing alpha integrin that undergoes post-translational cleavage in the extracellular domain, yielding disulfide-linked heavy and light chains. In combination with the beta 7 integrin, this protein forms the E-cadherin binding integrin known as the human mucosal lymphocyte-1 antigen. This protein is preferentially expressed in human intestinal intraepithelial lymphocytes (IEL), and in addition to a role in adhesion, it may serve as an accessory molecule for IEL activation. [provided by RefSeq, Jul 2008]</p>
<b>Protein Families:</b>	Druggable Genome, ES Cell Differentiation/IPS, Transmembrane
<b>Protein Pathways:</b>	Regulation of actin cytoskeleton

### Product images:



Coomassie blue staining of purified ITGAE protein (Cat# [TP317265]). The protein was produced from HEK293T cells transfected with ITGAE cDNA clone (Cat# [RC217265]) using MegaTran 2.0 (Cat# [TT210002]).