

## Product datasheet for PH317258

### IL32 (NM\_001012718) Human Mass Spec Standard

#### Product data:

Product Type:	Mass Spec Standards
Description:	IL32 MS Standard C13 and N15-labeled recombinant protein (NP_001012736)
Species:	Human
Expression Host:	HEK293
Expression cDNA Clone or AA Sequence:	RC217258
Predicted MW:	21.7 kDa
Protein Sequence:	<p>&gt;RC217258 protein sequence</p> <p>Red=Cloning site Green=Tags(s)</p> <p>MCFPKVLSDDMKKLKARMHQAIERFYDKMQNAESGRGQVMSSLALEDDFKEGYLETVAAYYEEQHPELT            PLLEKERDGLRCRGNRSPVPDVEDPATEEPGESFCDKVMRWFQAMLQRLQTWWHGVLAWVKEKVVALVHA            VQALWKQFQSFCCSLSELFMSFSQSYGAPRGDKEELTPQKCSEPQSSK</p> <p>TRTRPLEQKLISEEDLAANDILDYKDDDDKV</p>
Tag:	C-Myc/DDK
Purity:	> 80% as determined by SDS-PAGE and Coomassie blue staining
Concentration:	>0.05 µg/µL as determined by microplate BCA method
Labeling Method:	Labeled with [U- <sup>13</sup> C <sub>6</sub> , <sup>15</sup> N <sub>4</sub> ]-L-Arginine and [U- <sup>13</sup> C <sub>6</sub> , <sup>15</sup> N <sub>2</sub> ]-L-Lysine
Buffer:	25 mM Tris-HCl, 100 mM glycine, pH 7.3
Storage:	Store at -80°C. Avoid repeated freeze-thaw cycles.
Stability:	Stable for 3 months from receipt of products under proper storage and handling conditions.
RefSeq:	<u>NP_001012736</u>
RefSeq Size:	1093
RefSeq ORF:	564
Synonyms:	IL-32alpha; IL-32beta; IL-32delta; IL-32gamma; NK4; TAIF; TAIFa; TAIFb; TAIFc; TAIFd
Locus ID:	9235
UniProt ID:	<u>P24001</u>

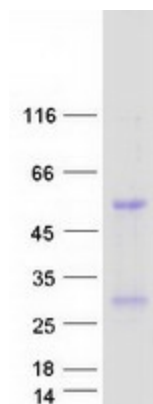

[View online »](#)

**Cytogenetics:** 16p13.3

**Summary:** This gene encodes a member of the cytokine family. The protein contains a tyrosine sulfation site, 3 potential N-myristoylation sites, multiple putative phosphorylation sites, and an RGD cell-attachment sequence. Expression of this protein is increased after the activation of T-cells by mitogens or the activation of NK cells by IL-2. This protein induces the production of TNFalpha from macrophage cells. Alternate transcriptional splice variants, encoding different isoforms, have been characterized. [provided by RefSeq, Jul 2008]

**Protein Families:** Secreted Protein

## Product images:



Coomassie blue staining of purified IL32 protein (Cat# [TP317258]). The protein was produced from HEK293T cells transfected with IL32 cDNA clone (Cat# [RC217258]) using MegaTran 2.0 (Cat# [TT210002]).