

Product datasheet for PH317172

M-CSF (CSF1) (NM_172211) Human Mass Spec Standard

Product data:

Product Type:	Mass Spec Standards
Description:	CSF1 MS Standard C13 and N15-labeled recombinant protein (NP_757350)
Species:	Human
Expression Host:	HEK293
Expression cDNA Clone or AA Sequence:	RC217172
Predicted MW:	29 kDa
Protein Sequence:	>RC217172 representing NM_172211 Red=Cloning site Green=Tags(s) MTAPGAAGRCPPPTWLGSLLLLVCLLASRSITEEVSEYCSHMIGSGHLQSLQRLIDSQMETSCQITFEFV DQEQLKDPVCYLKKAFLLVQDIMEDTMRFRDNTPNIAIAIVQLQELSLRLKSCFTKDYEEHDKACVRTFYE TPLQLLEKVKNVFNETKNLLDKDWNIFSKNCNNSFAECSSQGHERQSEGSSPQLQESVHLLVPSVILV LLAVGGLLFYRWRRRSHQEPQRADSPLEQPEGSPLTQDDRQVELPV TRTRPLEQKLI SEEDLAANDILDYKDDDDKV
Tag:	C-Myc/DDK
Purity:	> 80% as determined by SDS-PAGE and Coomassie blue staining
Concentration:	>0.05 µg/µL as determined by microplate BCA method
Labeling Method:	Labeled with [U- ¹³ C ₆ , ¹⁵ N ₄]-L-Arginine and [U- ¹³ C ₆ , ¹⁵ N ₂]-L-Lysine
Buffer:	25 mM Tris-HCl, 100 mM glycine, pH 7.3
Storage:	Store at -80°C. Avoid repeated freeze-thaw cycles.
Stability:	Stable for 3 months from receipt of products under proper storage and handling conditions.
RefSeq:	NP_757350
RefSeq Size:	1855
RefSeq ORF:	768
Synonyms:	CSF-1; MCSF
Locus ID:	1435
UniProt ID:	P09603



[View online »](#)

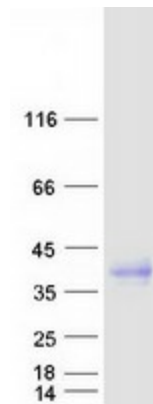
Cytogenetics: 1p13.3

Summary: The protein encoded by this gene is a cytokine that controls the production, differentiation, and function of macrophages. The active form of the protein is found extracellularly as a disulfide-linked homodimer, and is thought to be produced by proteolytic cleavage of membrane-bound precursors. The encoded protein may be involved in development of the placenta. Alternate splicing results in multiple transcript variants. [provided by RefSeq, Sep 2011]

Protein Families: Druggable Genome, ES Cell Differentiation/IPS, Secreted Protein, Transmembrane

Protein Pathways: Cytokine-cytokine receptor interaction, Hematopoietic cell lineage

Product images:



Coomassie blue staining of purified CSF1 protein (Cat# [TP317172]). The protein was produced from HEK293T cells transfected with CSF1 cDNA clone (Cat# [RC217172]) using MegaTran 2.0 (Cat# [TT210002]).