

Product datasheet for PH317163

MFGE8 (NM_005928) Human Mass Spec Standard

Product data:

Product Type:	Mass Spec Standards
Description:	MFGE8 MS Standard C13 and N15-labeled recombinant protein (NP_005919)
Species:	Human
Expression Host:	HEK293
Expression cDNA Clone or AA Sequence:	RC217163
Predicted MW:	42.9 kDa
Protein Sequence:	>RC217163 representing NM_005928 Red=Cloning site Green=Tags(s)
	MPRPRLAALCGALLCAPSLLVALDICKSNPCHNGGLCEEISQEVRGDVFPSYCTCTCLKGYAGNHCETKC VEPLGLENGNIANSQIAASSVRVTFGLQHWPELARLNFRAGMVNAWTPSSNDDNPWIQVNLRRMWVTG VVTQGASRLASHEYLKAFKVAYSLNGHEFDIHDVNKKHKEFVGNWNKNVHVNLFETPVEAQYVRLYPT SCHTACTLRFELLGCELNGCANPLGLKNSIPDKQITASSSYKTWGLHLFSWNPSYARLDKQGNFNAWVA GSYGNQWLQVDLGSSEKVTGIITQGARNFGSVQFVASYKVAYSNDSANWTEYQDPRTGSSKIFPGNWDN HSHKKNLFETPILARYVRILPVAWHNRIALRLELLGC
	TRTRPLEQKLISEEDLAANDILDYKDDDDKV
Tag:	C-Myc/DDK
Purity:	> 80% as determined by SDS-PAGE and Coomassie blue staining
Concentration:	>0.05 µg/µL as determined by microplate BCA method
Labeling Method:	Labeled with [U- ¹³ C ₆ , ¹⁵ N ₄]-L-Arginine and [U- ¹³ C ₆ , ¹⁵ N ₂]-L-Lysine
Buffer:	25 mM Tris-HCl, 100 mM glycine, pH 7.3
Storage:	Store at -80°C. Avoid repeated freeze-thaw cycles.
Stability:	Stable for 3 months from receipt of products under proper storage and handling conditions.
RefSeq:	<u>NP_005919</u>
RefSeq Size:	1934
RefSeq ORF:	1161
Synonyms:	BA46; EDIL1; HMFG; hP47; HsT19888; MFG-E8; MFGM; OAcGD3S; SED1; SPAG10
Locus ID:	4240



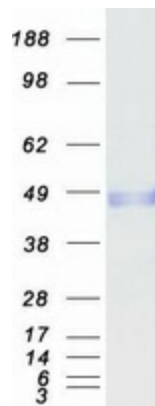
[View online »](#)

UniProt ID: [Q08431](#)

Cytogenetics: 15q26.1

Summary: This gene encodes a preproprotein that is proteolytically processed to form multiple protein products. The major encoded protein product, lactadherin, is a membrane glycoprotein that promotes phagocytosis of apoptotic cells. This protein has also been implicated in wound healing, autoimmune disease, and cancer. Lactadherin can be further processed to form a smaller cleavage product, medin, which comprises the major protein component of aortic medial amyloid (AMA). Alternative splicing results in multiple transcript variants. [provided by RefSeq, Jul 2015]

Product images:



Coomassie blue staining of purified MFGE8 protein (Cat# [TP317163]). The protein was produced from HEK293T cells transfected with MFGE8 cDNA clone (Cat# [RC217163]) using MegaTran 2.0 (Cat# [TT210002]).