

Product datasheet for PH317117

GMEB1 (NM_006582) Human Mass Spec Standard

Product data:

Product Type:	Mass Spec Standards
Description:	GMEB1 MS Standard C13 and N15-labeled recombinant protein (NP_006573)
Species:	Human
Expression Host:	HEK293
Expression cDNA Clone or AA Sequence:	RC217117
Predicted MW:	62.4 kDa
Protein Sequence:	>RC217117 representing NM_006582 Red=Cloning site Green=Tags(s)

MANAEVSPVGDVVVVPTEGNEGENPEDTKTQVILQLQPVQQGLFIDGHFYNRIYEAGSENNTAVVAVET
HTIHKIEEGIDTGTIEANEDMEIAYPITCGESKAILLWKKFVCPGINVKCVKFNQDLISPKHFVHLAGKS
TLKDWKRAIRLGGIMLRKMMDSGQIDFYQHDKVCSNTRSTKFDLLISSARAPVPGQQTSTVVTPTSDAG
SITQIAISEESMEEAGLEWNSAL TAAVTMATEEGVKKDSSEI SEDTLMFWKGIADVGLMEEVVCNIQKEI
EELLRGVQQRLIQAPFQVTDAAVLNNVAHTFGLMDTVKKVLDNRRNQVEQGEEQFLYTLTDLERQLEEQK
KQGQDHRKLSQTVQNVVLMVSTPKPPKRPRLRPASTTVLSPSPVPPVQPFQFTVISPITITPVGQSF SMG
NIPVATLSQGSSPVTVHTLPSGPQLFRYATVVSSAKSSSPDVTIHPSSSLALLSSTAMQDGTGTLGNMTT
MVSPVELVAMESGLTSAIQAVESTSEDGQTIIEIDPAPDPEAEDTEGKAVILETELRTTEEKVVAEMEEHQ
HQVHNVEIVVLED

TRTRPLEQKLISEEDLAANDILDYKDDDDKV

Tag:	C-Myc/DDK
Purity:	> 80% as determined by SDS-PAGE and Coomassie blue staining
Concentration:	>0.05 µg/µL as determined by microplate BCA method
Labeling Method:	Labeled with [U- ¹³ C ₆ , ¹⁵ N ₄]-L-Arginine and [U- ¹³ C ₆ , ¹⁵ N ₂]-L-Lysine
Buffer:	25 mM Tris-HCl, 100 mM glycine, pH 7.3
Storage:	Store at -80°C. Avoid repeated freeze-thaw cycles.
Stability:	Stable for 3 months from receipt of products under proper storage and handling conditions.
RefSeq:	NP_006573
RefSeq Size:	1960
RefSeq ORF:	1719



[View online »](#)

Synonyms: P96PIF; PIF96

Locus ID: 10691

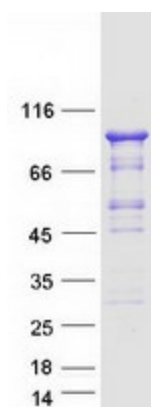
UniProt ID: [Q9Y692](#), [B2RCN8](#)

Cytogenetics: 1p35.3

Summary: This gene encodes a member of KDWK gene family which associates with GMEB2 protein. The GMEB1-GMEB2 complex is essential for parvovirus DNA replication. Studies in rat for a similar gene suggest that this gene's role is to modulate the transactivation of the glucocorticoid receptor when it is bound to glucocorticoid response elements. Three alternative spliced transcript variants encoding different isoforms exist. [provided by RefSeq, Feb 2016]

Protein Families: Druggable Genome, Transcription Factors

Product images:



Coomassie blue staining of purified GMEB1 protein (Cat# [TP317117]). The protein was produced from HEK293T cells transfected with GMEB1 cDNA clone (Cat# [RC217117]) using MegaTran 2.0 (Cat# [TT210002]).