

## Product datasheet for PH317106

### ELOF1 (NM\_032377) Human Mass Spec Standard

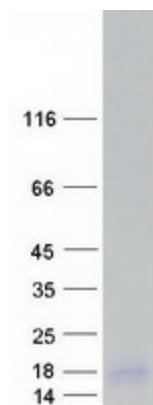
#### Product data:

Product Type:	Mass Spec Standards
Description:	ELOF1 MS Standard C13 and N15-labeled recombinant protein (NP_115753)
Species:	Human
Expression Host:	HEK293
Expression cDNA Clone or AA Sequence:	RC217106
Predicted MW:	9.3 kDa
Protein Sequence:	<p>&gt;RC217106 representing NM_032377</p> <p>Red=Cloning site Green=Tags(s)</p> <p>MGRRKSKRKPPPKKMTGTLETQFTCPFCNHEKSCDVKMDRARNTGVISCTVCLEEFQTPITYLSEPV            YSDWIDACEAANQ</p> <p>TRTRPLEQKLISEEDLAANDILDYKDDDDKV</p>
Tag:	C-Myc/DDK
Purity:	> 80% as determined by SDS-PAGE and Coomassie blue staining
Concentration:	>0.05 µg/µL as determined by microplate BCA method
Labeling Method:	Labeled with [U- 13C6, 15N4]-L-Arginine and [U- 13C6, 15N2]-L-Lysine
Buffer:	25 mM Tris-HCl, 100 mM glycine, pH 7.3
Storage:	Store at -80°C. Avoid repeated freeze-thaw cycles.
Stability:	Stable for 3 months from receipt of products under proper storage and handling conditions.
RefSeq:	<u><a href="#">NP_115753</a></u>
RefSeq Size:	982
RefSeq ORF:	249
Synonyms:	ELF1
Locus ID:	84337
UniProt ID:	<u><a href="#">P60002</a></u>
Cytogenetics:	19p13.2


[View online »](#)

**Summary:** Transcription elongation factor implicated in the maintenance of proper chromatin structure in actively transcribed regions.[UniProtKB/Swiss-Prot Function]

**Product images:**



Coomassie blue staining of purified ELOF1 protein (Cat# [TP317106]). The protein was produced from HEK293T cells transfected with ELOF1 cDNA clone (Cat# [RC217106]) using MegaTran 2.0 (Cat# [TT210002]).