

Product datasheet for PH317104

M-CSF (CSF1) (NM_000757) Human Mass Spec Standard

Product data:

Product Type:	Mass Spec Standards
Description:	CSF1 MS Standard C13 and N15-labeled recombinant protein (NP_000748)
Species:	Human
Expression Host:	HEK293
Expression cDNA Clone or AA Sequence:	RC217104
Predicted MW:	60.1 kDa
Protein Sequence:	>RC217104 protein sequence Red =Cloning site Green =Tags(s)

MTAPGAAGRCPPPTWLGSLLLLVCLLASRSITEEVSEYCSHMIGSGHLQSLQRLIDSQMETSCQITFEFV
 DQEQLKDPVCYLKKAFLLVQDIMEDTMRFRDNTNPNAIAIVQLQELSLRLKSCFTKDYEEHDKACVRTFYE
 TPLQLLEKVKNVFNETKNLLDKDWNIFSKNCNNSFAECSSQDVVTKPDCNCLYPKAIPSSDPASVSPHQ
 LAPSMAPVAGLTWEDSEGTEGSSLLPGEQPLHTVDPGSAKQRPSTCQSFEPPEPTPVVKDSTIGGSPQP
 RPSVGAFAFNGMEDILDSAMGTNWVPEEASGEASEIPVPQGTLSRSPRGGGSMQTEPARPSNFLSASSPL
 PASAKGQQPADVTGTALPRVGPVRPTGQDWNHTPQKTDHPSALLRDPPEPGSPRISSLRPQGLSNPSTLS
 AQPQLSRSHSSGSVLPLGELEGRSTRDRRSPAEPGGPASEGAARPLPRFNSVPLTDTGHERQSEGSSS
 PQLQESVFHLLVPSVILVLLAVGGLLFYRWRRRSHQEPQRADSPLEQPEGSPLTQDDRQVELPV

TRTRPLEQKLISEEDLAANDILDYKDDDDKV

Tag:	C-Myc/DDK
Purity:	> 80% as determined by SDS-PAGE and Coomassie blue staining
Concentration:	>0.05 µg/µL as determined by microplate BCA method
Labeling Method:	Labeled with [U- ¹³ C ₆ , ¹⁵ N ₄]-L-Arginine and [U- ¹³ C ₆ , ¹⁵ N ₂]-L-Lysine
Buffer:	25 mM Tris-HCl, 100 mM glycine, pH 7.3
Storage:	Store at -80°C. Avoid repeated freeze-thaw cycles.
Stability:	Stable for 3 months from receipt of products under proper storage and handling conditions.
RefSeq:	<u>NP_000748</u>
RefSeq Size:	4249
RefSeq ORF:	1662


[View online »](#)

Synonyms: CSF-1; MCSF

Locus ID: 1435

UniProt ID: [P09603](#), [A0A024R0A1](#)

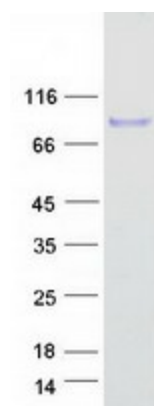
Cytogenetics: 1p13.3

Summary: The protein encoded by this gene is a cytokine that controls the production, differentiation, and function of macrophages. The active form of the protein is found extracellularly as a disulfide-linked homodimer, and is thought to be produced by proteolytic cleavage of membrane-bound precursors. The encoded protein may be involved in development of the placenta. Alternate splicing results in multiple transcript variants. [provided by RefSeq, Sep 2011]

Protein Families: Druggable Genome, ES Cell Differentiation/IPS, Secreted Protein, Transmembrane

Protein Pathways: Cytokine-cytokine receptor interaction, Hematopoietic cell lineage

Product images:



Coomassie blue staining of purified CSF1 protein (Cat# [TP317104]). The protein was produced from HEK293T cells transfected with CSF1 cDNA clone (Cat# [RC217104]) using MegaTran 2.0 (Cat# [TT210002]).