

Product datasheet for PH317103

Glycophorin C (GYPC) (NM_016815) Human Mass Spec Standard

Product data:

Product Type:	Mass Spec Standards
Description:	GYPC MS Standard C13 and N15-labeled recombinant protein (NP_058131)
Species:	Human
Expression Host:	HEK293
Expression cDNA Clone or AA Sequence:	RC217103
Predicted MW:	11.7 kDa
Protein Sequence:	>RC217103 representing NM_016815 Red=Cloning site Green=Tags(s) MWSTRSPNSTAWPLSLEPDPGMSGWPDGRMETSTPTIMDIIVVIAGVIAAVAIVLVSLLFVMLRYMYRHKG TYHTNEAKGTEFAESADAALQGDPALQDAGDSSRKEYFI TRTRPLEQKLI SEEDLAANDILDYKDDDDKV
Tag:	C-Myc/DDK
Purity:	> 80% as determined by SDS-PAGE and Coomassie blue staining
Concentration:	>0.05 µg/µL as determined by microplate BCA method
Labeling Method:	Labeled with [U- 13C6, 15N4]-L-Arginine and [U- 13C6, 15N2]-L-Lysine
Buffer:	25 mM Tris-HCl, 100 mM glycine, pH 7.3
Storage:	Store at -80°C. Avoid repeated freeze-thaw cycles.
Stability:	Stable for 3 months from receipt of products under proper storage and handling conditions.
RefSeq:	NP_058131
RefSeq Size:	1019
RefSeq ORF:	327
Synonyms:	CD236; CD236R; GE; GE:GPC:GPD:GYPD; GPC; GPD; GYPD; PAS-2; PAS-2'
Locus ID:	2995
UniProt ID:	P04921
Cytogenetics:	2q14.3



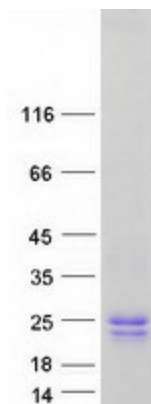
[View online »](#)

Summary:

Glycophorin C (GYPC) is an integral membrane glycoprotein. It is a minor species carried by human erythrocytes, but plays an important role in regulating the mechanical stability of red cells. A number of glycophorin C mutations have been described. The Gerbich and Yus phenotypes are due to deletion of exon 3 and 2, respectively. The Webb and Duch antigens, also known as glycophorin D, result from single point mutations of the glycophorin C gene. The glycophorin C protein has very little homology with glycophorins A and B. Alternate splicing results in multiple transcript variants. [provided by RefSeq, Feb 2012]

Protein Families:

Druggable Genome, Transmembrane

Product images:

Coomassie blue staining of purified GYPC protein (Cat# [TP317103]). The protein was produced from HEK293T cells transfected with GYPC cDNA clone (Cat# [RC217103]) using MegaTran 2.0 (Cat# [TT210002]).