

Product datasheet for PH317083

SKAP55 (SKAP1) (NM_003726) Human Mass Spec Standard

Product data:

| | |
|---------------------------------------|---|
| Product Type: | Mass Spec Standards |
| Description: | SKAP1 MS Standard C13 and N15-labeled recombinant protein (NP_003717) |
| Species: | Human |
| Expression Host: | HEK293 |
| Expression cDNA Clone or AA Sequence: | RC217083 |
| Predicted MW: | 41.3 kDa |
| Protein Sequence: | >RC217083 representing NM_003726 Red=Cloning site Green=Tags(s) MQAAALPEEIRWLLLEDAEEFLAEGLRNENLSAVARDHRDHILRGFQQIKARYYWDFQPQGGDIGQDSSDD NHSGTLGLSLTSDAPFLSDYQDEGMEDIVKGAQELDNVIKQGYLEKKS KDHSFFGSEWQKRWCVVSRLG YYYANEKSKQPKGTFLIKGYSVRMAPHLRRDSKKE SCFELTSQDRRSYEF TATSPAEARDWVDQISFLK DLSSLTIPYEDEEEEEKEETYDDIDGFDSPSCGSQCRPTILPGSVGIKEPTEEKEEEDIYEVLPDEEHD LEEDES GTRRKGV D YASYQGLWDCHGDPDEL SFQRGDLIRILSKEYNMYGWWV GELNSLVGIVPKEYL TTAFEVEER TRTRPLEQKLI SEEDLAANDILDYKDDDDKV |
| Tag: | C-Myc/DDK |
| Purity: | > 80% as determined by SDS-PAGE and Coomassie blue staining |
| Concentration: | >0.05 µg/µL as determined by microplate BCA method |
| Labeling Method: | Labeled with [U- ¹³ C ₆ , ¹⁵ N ₄]-L-Arginine and [U- ¹³ C ₆ , ¹⁵ N ₂]-L-Lysine |
| Buffer: | 25 mM Tris-HCl, 100 mM glycine, pH 7.3 |
| Storage: | Store at -80°C. Avoid repeated freeze-thaw cycles. |
| Stability: | Stable for 3 months from receipt of products under proper storage and handling conditions. |
| RefSeq: | <u>NP_003717</u> |
| RefSeq Size: | 1531 |
| RefSeq ORF: | 1077 |
| Synonyms: | HEL-S-81p; SCAP1; SKAP55 |
| Locus ID: | 8631 |



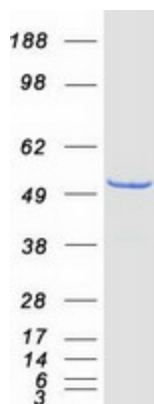
[View online »](#)

UniProt ID: [Q86WV1](#)

Cytogenetics: 17q21.32

Summary: This gene encodes a T cell adaptor protein, a class of intracellular molecules with modular domains capable of recruiting additional proteins but that exhibit no intrinsic enzymatic activity. The encoded protein contains a unique N-terminal region followed by a PH domain and C-terminal SH3 domain. Along with the adhesion and degranulation-promoting adaptor protein, the encoded protein plays a critical role in inside-out signaling by coupling T-cell antigen receptor stimulation to the activation of integrins. [provided by RefSeq, Jul 2008]

Product images:



Coomassie blue staining of purified SKAP1 protein (Cat# [TP317083]). The protein was produced from HEK293T cells transfected with SKAP1 cDNA clone (Cat# [RC217083]) using MegaTran 2.0 (Cat# [TT210002]).