

## Product datasheet for PH317067

### LY6G6F (NM\_001003693) Human Mass Spec Standard

#### Product data:

Product Type:	Mass Spec Standards
Description:	LY6G6F MS Standard C13 and N15-labeled recombinant protein (NP_001003693)
Species:	Human
Expression Host:	HEK293
Expression cDNA Clone or AA Sequence:	RC217067
Predicted MW:	32.46 kDa
Protein Sequence:	>RC217067 representing NM_001003693 Red=Cloning site Green=Tags(s)  MAVLFLLFLFCGTPQAADNMQAIYVALGEAVELPCSPPTLHGDEHLSWFCSPAAGSFTTLVAQVQVGRP APDPGKPGRESRLRLGNYSLWLEGSKEEDAGRYWCAVLGQHHNYQNWRVYDVLVLKGSLSARAADGSP CNVLLCSVVPSSRMDSVTWQEGKGPVGRVQSFWGSEAALLLVCPGGLSEPRSRPRIIRCLMTHNKGV SFSLAASIDASPALCAPSTGWDMPWILMLLLTMGQGVVILALSIVLWRQVRGAPGRDASIPQFKPEIQV YENIHLARLGPPAHKPR  TRTRPLEQKLISEEDLAANDILDYKDDDDKV
Tag:	C-Myc/DDK
Purity:	> 80% as determined by SDS-PAGE and Coomassie blue staining
Concentration:	>0.05 µg/µL as determined by microplate BCA method
Labeling Method:	Labeled with [U- <sup>13</sup> C <sub>6</sub> , <sup>15</sup> N <sub>4</sub> ]-L-Arginine and [U- <sup>13</sup> C <sub>6</sub> , <sup>15</sup> N <sub>2</sub> ]-L-Lysine
Buffer:	25 mM Tris-HCl, 100 mM glycine, pH 7.3
Storage:	Store at -80°C. Avoid repeated freeze-thaw cycles.
Stability:	Stable for 3 months from receipt of products under proper storage and handling conditions.
RefSeq:	<a href="#">NP_001003693</a>
RefSeq Size:	898
RefSeq ORF:	891
Synonyms:	C6orf21; G6f; LY6G6; LY6G6D; NG32
Locus ID:	259215



[View online »](#)

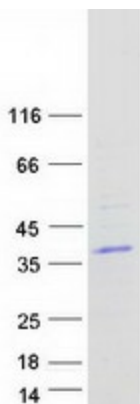
UniProt ID: [Q5SQ64](#), [A0A1L6Z9Z3](#)

Cytogenetics: 6p21.33

Summary: The human G6f protein is a type I transmembrane protein belonging to the immunoglobulin (Ig) superfamily, which is comprised of cell-surface proteins involved in the immune system and cellular recognition (de Vet et al., 2003 [PubMed 12852788]).[supplied by OMIM, Mar 2008]

Protein Families: Transmembrane

### Product images:



Coomassie blue staining of purified LY6G6F protein (Cat# [TP317067]). The protein was produced from HEK293T cells transfected with LY6G6F cDNA clone (Cat# [RC217067]) using MegaTran 2.0 (Cat# [TT210002]).