

Product datasheet for PH317059

CAMK2G (NM_172173) Human Mass Spec Standard

Product data:

Product Type:	Mass Spec Standards
Description:	CAMK2G MS Standard C13 and N15-labeled recombinant protein (NP_751913)
Species:	Human
Expression Host:	HEK293
Expression cDNA Clone or AA Sequence:	RC217059
Predicted MW:	56.8 kDa
Protein Sequence:	>RC217059 representing NM_172173 Red=Cloning site Green=Tags(s)

MATTATCTRTDDYQLFEELGKGAFSVVRRVCVKKTSTQEYAAKIINTKKLSARDHQKLEREARICRLLKH
PNIVRLHDSISEEGFHYLVFDLVTGGELFEDIVAREYYSEADASHCIHQILESVNHIHQHDIVHRDLKPE
NLLLASKCKGAAYKLADFGLAIEVQGEQQAWFGFAGTPGYLSPEVLRKDPYKPKVDIWACGVILYILLVG
YPPFWDEDQHKLYQQIKAGAYDFPSPEWDTVTPEAKNLINQMLTINPAKRITADQALKHPWVCQRSTVAS
MMHRQETVECLRKFNARRKLGAILTTMLVSRNFSAAKSLLNKKSDDGGVKPQSNNKNSLEPQTTVVHNAT
DGIKGSTESCNTTTEDEDLKVRKQEI IKITEQLIEAINNGDFEAYTKICDPGLTSFEPEALGNLVEGMDF
HKFYFENLLSKNSKPIHTTILNPHVHVIGEDAACIAYIRLTQYIDGQGRPRTSQSEETRVWHRDGGKWLN
VHYHCSGAPAAPLQ

TRTRPLEQKLI SEEDLAANDILDYKDDDDKV

Tag:	C-Myc/DDK
Purity:	> 80% as determined by SDS-PAGE and Coomassie blue staining
Concentration:	>0.05 µg/µL as determined by microplate BCA method
Labeling Method:	Labeled with [U- 13C6, 15N4]-L-Arginine and [U- 13C6, 15N2]-L-Lysine
Buffer:	25 mM Tris-HCl, 100 mM glycine, pH 7.3
Storage:	Store at -80°C. Avoid repeated freeze-thaw cycles.
Stability:	Stable for 3 months from receipt of products under proper storage and handling conditions.
RefSeq:	<u>NP_751913</u>
RefSeq Size:	3665
RefSeq ORF:	1512



[View online »](#)

Synonyms: CAMK; CAMK-II; CAMKG; MRD59

Locus ID: 818

UniProt ID: [Q13555](#)

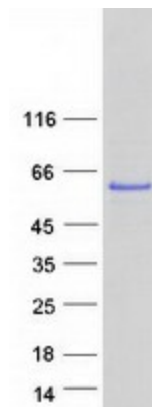
Cytogenetics: 10q22.2

Summary: The product of this gene is one of the four subunits of an enzyme which belongs to the serine/threonine protein kinase family, and to the Ca(2+)/calmodulin-dependent protein kinase subfamily. Calcium signaling is crucial for several aspects of plasticity at glutamatergic synapses. In mammalian cells the enzyme is composed of four different chains: alpha, beta, gamma, and delta. The product of this gene is a gamma chain. Many alternatively spliced transcripts encoding different isoforms have been described but the full-length nature of all the variants has not been determined.[provided by RefSeq, Mar 2011]

Protein Families: Druggable Genome, Protein Kinase

Protein Pathways: Calcium signaling pathway, ErbB signaling pathway, Glioma, GnRH signaling pathway, Long-term potentiation, Melanogenesis, Neurotrophin signaling pathway, Olfactory transduction, Oocyte meiosis, Wnt signaling pathway

Product images:



Coomassie blue staining of purified CAMK2G protein (Cat# [TP317059]). The protein was produced from HEK293T cells transfected with CAMK2G cDNA clone (Cat# [RC217059]) using MegaTran 2.0 (Cat# [TT210002]).