

Product datasheet for PH317032

CRCP (NM_014478) Human Mass Spec Standard

Product data:

Product Type:	Mass Spec Standards
Description:	CRCP MS Standard C13 and N15-labeled recombinant protein (NP_055293)
Species:	Human
Expression Host:	HEK293
Expression cDNA Clone or AA Sequence:	RC217032
Predicted MW:	16.7 kDa
Protein Sequence:	>RC217032 representing NM_014478 Red=Cloning site Green=Tags(s) MEVKDANSALLSNYEVFQLLTDLKEQRKESGKNKHSSGQQLNLTITYETLKYISKTPCRHQSP EIVREFL TALKSHKLTKA EKLQLLNHRPVTA VEIQLMVEESEERL TEEQIEALLHTVTSILPAEPEAEQKKN TNSNV AMDEEDPA TRTRPLEQKLI SEEDLAANDILDYKDDDDKV
Tag:	C-Myc/DDK
Purity:	> 80% as determined by SDS-PAGE and Coomassie blue staining
Concentration:	>0.05 µg/µL as determined by microplate BCA method
Labeling Method:	Labeled with [U- ¹³ C ₆ , ¹⁵ N ₄]-L-Arginine and [U- ¹³ C ₆ , ¹⁵ N ₂]-L-Lysine
Buffer:	25 mM Tris-HCl, 100 mM glycine, pH 7.3
Storage:	Store at -80°C. Avoid repeated freeze-thaw cycles.
Stability:	Stable for 3 months from receipt of products under proper storage and handling conditions.
RefSeq:	NP_055293
RefSeq Size:	1048
RefSeq ORF:	444
Synonyms:	C17; CGRP-RCP; CGRPRCP; POLR3I; POLR3J; RCP; RCP9; RPC9
Locus ID:	27297
UniProt ID:	O75575 , A0A024RDLO



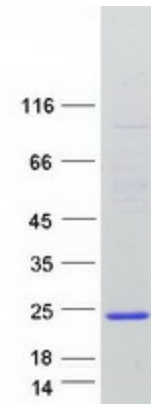
[View online »](#)

Cytogenetics: 7q11.21

Summary: This gene encodes a membrane protein that functions as part of a receptor complex for a small neuropeptide that increases intracellular cAMP levels. Alternate transcriptional splice variants, encoding different isoforms, have been characterized. [provided by RefSeq, Jul 2008]

Protein Families: Druggable Genome

Product images:



Coomassie blue staining of purified CRCP protein (Cat# [TP317032]). The protein was produced from HEK293T cells transfected with CRCP cDNA clone (Cat# [RC217032]) using MegaTran 2.0 (Cat# [TT210002]).