

Product datasheet for PH316914

TSH beta (TSHB) (NM_000549) Human Mass Spec Standard

Product data:

Product Type:	Mass Spec Standards
Description:	TSHB MS Standard C13 and N15-labeled recombinant protein (NP_000540)
Species:	Human
Expression Host:	HEK293
Expression cDNA Clone or AA Sequence:	RC216914
Predicted MW:	15.61 kDa
Protein Sequence:	>RC216914 representing NM_000549 Red =Cloning site Green =Tags(s) MTALFLMSMLFGLACGQAMSFCIPTEYTMHIERRECAAYCLTINTTICAGYCMTRDINGKLF LPKYALSQD VCTYRDFIYRTVEIPGCPLHVAPYFSYPVALSCKCGKCNTDYSDCIHEAIKTNCTKPQKSYLVGFVS TR TRPLEQKLISEEDLAANDILDYKDDDDKV
Tag:	C-Myc/DDK
Purity:	> 80% as determined by SDS-PAGE and Coomassie blue staining
Concentration:	>0.05 µg/µL as determined by microplate BCA method
Labeling Method:	Labeled with [U- 13C6, 15N4]-L-Arginine and [U- 13C6, 15N2]-L-Lysine
Buffer:	25 mM Tris-HCl, 100 mM glycine, pH 7.3
Storage:	Store at -80°C. Avoid repeated freeze-thaw cycles.
Stability:	Stable for 3 months from receipt of products under proper storage and handling conditions.
RefSeq:	NP_000540
RefSeq Size:	578
RefSeq ORF:	414
Synonyms:	TSH-B; TSH-BETA
Locus ID:	7252
UniProt ID:	P01222
Cytogenetics:	1p13.2



[View online »](#)

Summary:

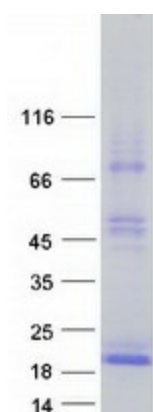
The four human glycoprotein hormones chorionic gonadotropin (CG), luteinizing hormone (LH), follicle stimulating hormone (FSH), and thyroid stimulating hormone (TSH) are dimers consisting of alpha and beta subunits that are associated noncovalently. The alpha subunits of these hormones are identical, however, their beta chains are unique and confer biological specificity. Thyroid stimulating hormone functions in the control of thyroid structure and metabolism. The protein encoded by this gene is the beta subunit of thyroid stimulating hormone. Mutations in this gene are associated with congenital central and secondary hypothyroidism and Hashimoto's thyroiditis. Alternative splicing of this gene results in multiple transcript variants. [provided by RefSeq, May 2013]

Protein Families:

Druggable Genome, Secreted Protein

Protein Pathways:

Autoimmune thyroid disease, Neuroactive ligand-receptor interaction

Product images:

Coomassie blue staining of purified TSHB protein (Cat# [TP316914]). The protein was produced from HEK293T cells transfected with TSHB cDNA clone (Cat# [RC216914]) using MegaTran 2.0 (Cat# [TT210002]).