

Product datasheet for PH316900

POTEB3 (NM_207355) Human Mass Spec Standard

Product data:

Product Type:	Mass Spec Standards
Description:	POTEB MS Standard C13 and N15-labeled recombinant protein (NP_997238)
Species:	Human
Expression Host:	HEK293
Expression cDNA Clone or AA Sequence:	RC216900
Predicted MW:	65.7 kDa
Protein Sequence:	>RC216900 protein sequence Red=Cloning site Green=Tags(s)

MVAEVCSPAASAVKKPFDLRSMGKWCHHRFPCCRGSGKSNMGTSGDHDDSFMKTLRSMGKCCHHCFP
CCRGSGTENVGTSGDHDNSFMKTLRSMGKWCCFCPCRGSGKSNVGTWGDYDDSAFMEPRYHVRREDL
DKLHRAAWGKVPKDLIVMLRDTDMNKRDKQKRTALHLASANGNSEVQQLLDLDRRCQLNVLDNKKRTAL
IKAVQCQEDECVLMLEHGADGNIQDEYGNALHYAIYNEDKLMKALLLYGADIESKNKCGLTPLLLGV
HEQKQVVKFLIKKKANLNALDRYGRALILAVCCGSASIVNLLLEQNVDVSSQDLSGQTAREYAVSSH
HVICELLSDYKEKQMLKISSSENSPEQDLKLTSEESQRLKVSSENSQPEKMSQPEINKDCREVEEIK
KHGSPVGLPENLTNGASAGNGDGLIPQRKSRKPNQFPDTENEEYHSDEQNDTQKQLSEEQNTGISQ
DEILTNKQKQIEVAEKEMNSELSLHKKEEDLLRENSMLREEIAKLRLLEDETKHQNLRENKILEEIES
VKEKLLKTIQLNEEALTKTSI

TRTRPLEQKLISEEDLAANDILDYKDDDDKV

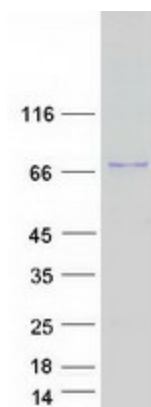
Tag:	C-Myc/DDK
Purity:	> 80% as determined by SDS-PAGE and Coomassie blue staining
Concentration:	>0.05 µg/µL as determined by microplate BCA method
Labeling Method:	Labeled with [U- 13C6, 15N4]-L-Arginine and [U- 13C6, 15N2]-L-Lysine
Buffer:	25 mM Tris-HCl, 100 mM glycine, pH 7.3
Storage:	Store at -80°C. Avoid repeated freeze-thaw cycles.
Stability:	Stable for 3 months from receipt of products under proper storage and handling conditions.
RefSeq:	NP_997238
RefSeq Size:	2136
RefSeq ORF:	1743



[View online »](#)

Synonyms: POTE-15; POTEB
Locus ID: 102724631
UniProt ID: [Q6S5H4](#), [A0JP26](#)
Cytogenetics: 15q11.2

Product images:



Coomassie blue staining of purified POTEB3 protein (Cat# [TP316900]). The protein was produced from HEK293T cells transfected with POTEB3 cDNA clone (Cat# [RC216900]) using MegaTran 2.0 (Cat# [TT210002]).