

Product datasheet for PH316861

A1CF (NM_138932) Human Mass Spec Standard

Product data:

Product Type:	Mass Spec Standards
Description:	A1CF MS Standard C13 and N15-labeled recombinant protein (NP_620310)
Species:	Human
Expression Host:	HEK293
Expression cDNA Clone or AA Sequence:	RC216861
Predicted MW:	65.2 kDa
Protein Sequence:	>RC216861 protein sequence Red=Cloning site Green=Tags(s)

MESNHKSGDGLSGTQKEAALRALVQRTGYSLVQENGQRKYGGPPPGWDAAPPERGCEIFIGKLPRLDFED
ELIPLCEKIGKIYEMRMMDFNGNRRGYAFVTF SNKVEAKNAIKQLNNEYIRNGRLLGVCASVDNCRFLV
GGIPKTKKREEILSEMKKVTEGVVDVIVYPSAADKTKNRGFAFVEYESHRAAAMARRKLLPGRIQLWGHG
IAVDWAEPEVEDEDTMSSVKILYVRNMLSTSEEMIEKEFNNIKPGAVERVKKIRDYAFVHFSNREDAV
EAMKALNGKVLGDSPIEVTLAKPVDKDSYVRYTRGTGGRGTMLQGEYTYSLGQVYDPTTTYLGAPVFYAP
QTYAAIPSLHFPATKGHLNRAIRAPSVREIYMNVPVGAAGVRGLGGRGYLAYTGLGRGYQVKGDKRED
KLYDILPGMELTPMNPVTLKPQGIKLAPQILEEICQKNNWGPVYQLHSAIGDQRQLFLYKITIPALAS
QNP AIHPFTPPKLSAFVDEAKTYAAEYTLQTLGIPTDGGDGTMAAAAAATAFPGYAVPNATAPVSAACL
KQAVTLGQDLAAYTTYEVYPTFAVTARGDGYGTF

TRTRPLEQKLISEEDLAANDILDYKDDDDKV

Tag:	C-Myc/DDK
Purity:	> 80% as determined by SDS-PAGE and Coomassie blue staining
Concentration:	>0.05 µg/µL as determined by microplate BCA method
Labeling Method:	Labeled with [U- 13C6, 15N4]-L-Arginine and [U- 13C6, 15N2]-L-Lysine
Buffer:	25 mM Tris-HCl, 100 mM glycine, pH 7.3
Storage:	Store at -80°C. Avoid repeated freeze-thaw cycles.
Stability:	Stable for 3 months from receipt of products under proper storage and handling conditions.
RefSeq:	NP_620310
RefSeq Size:	9293
RefSeq ORF:	1782



[View online »](#)

Synonyms: ACF; ACF64; ACF65; APOBEC1CF; ASP

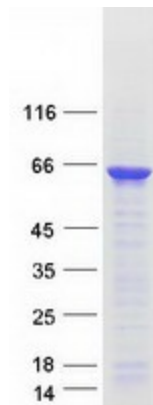
Locus ID: 29974

UniProt ID: [Q9NQ94](#), [A0A024QZM7](#)

Cytogenetics: 10q11.23

Summary: Mammalian apolipoprotein B mRNA undergoes site-specific C to U deamination, which is mediated by a multi-component enzyme complex containing a minimal core composed of APOBEC-1 and a complementation factor encoded by this gene. The gene product has three non-identical RNA recognition motifs and belongs to the hnRNP R family of RNA-binding proteins. It has been proposed that this complementation factor functions as an RNA-binding subunit and docks APOBEC-1 to deaminate the upstream cytidine. Studies suggest that the protein may also be involved in other RNA editing or RNA processing events. Several transcript variants encoding a few different isoforms have been found for this gene. [provided by RefSeq, Nov 2010]

Product images:



Coomassie blue staining of purified A1CF protein (Cat# [TP316861]). The protein was produced from HEK293T cells transfected with A1CF cDNA clone (Cat# [RC216861]) using MegaTran 2.0 (Cat# [TT210002]).