

## Product datasheet for PH316858

### Apolipoprotein L 2 (APOL2) (NM\_145637) Human Mass Spec Standard

#### Product data:

Product Type:	Mass Spec Standards
Description:	APOL2 MS Standard C13 and N15-labeled recombinant protein (NP_663612)
Species:	Human
Expression Host:	HEK293
Expression cDNA Clone or AA Sequence:	RC216858
Predicted MW:	37.1 kDa
Protein Sequence:	>RC216858 protein sequence Red=Cloning site Green=Tags(s)

MNPESSIFIEDYLKYFQDQVSRENLLQLLTDDEAWNGFVAAAELPRDEADELRKALNKLASHMVMKDKNR  
HDKDQQRQWFLKEFPRLKRELEDHIRKLRALAEVEQVHRGTTIANVVSNSVGTTSGLTLLGLGLAPF  
TEGISFVLLDTGMGLGAAAAGITCSVVELVNKLARAQARNLDQSGTNVAKVMKEFVGGNTPNVLTLV  
DNWYQVTQGIGRNIRAIRRANPQLGAYAPPHVIGRISAEGGEQVERVVEGPAQAMSRGTMIVGAATG  
GILLLLDVVSLAYESKHLLEGAKSESAEELKKRAQELEGKLNFLTKIHEMLQPGQDQ

TRTRPLEQKLISEEDLAANDILDYKDDDDKV

Tag:	C-Myc/DDK
Purity:	> 80% as determined by SDS-PAGE and Coomassie blue staining
Concentration:	>0.05 µg/µL as determined by microplate BCA method
Labeling Method:	Labeled with [U- <sup>13</sup> C <sub>6</sub> , <sup>15</sup> N <sub>4</sub> ]-L-Arginine and [U- <sup>13</sup> C <sub>6</sub> , <sup>15</sup> N <sub>2</sub> ]-L-Lysine
Buffer:	25 mM Tris-HCl, 100 mM glycine, pH 7.3
Storage:	Store at -80°C. Avoid repeated freeze-thaw cycles.
Stability:	Stable for 3 months from receipt of products under proper storage and handling conditions.
RefSeq:	<a href="#">NP_663612</a>
RefSeq Size:	2686
RefSeq ORF:	1011
Synonyms:	APOL-II; APOL3
Locus ID:	23780



[View online »](#)

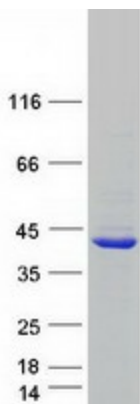
UniProt ID: [Q9BQE5](#), [A0A024R1M8](#)

Cytogenetics: 22q12.3

Summary: This gene is a member of the apolipoprotein L gene family. The encoded protein is found in the cytoplasm, where it may affect the movement of lipids or allow the binding of lipids to organelles. Two transcript variants encoding the same protein have been found for this gene. [provided by RefSeq, Jul 2008]

Protein Families: Druggable Genome, Transmembrane

### Product images:



Coomassie blue staining of purified APOL2 protein (Cat# [TP316858]). The protein was produced from HEK293T cells transfected with APOL2 cDNA clone (Cat# [RC216858]) using MegaTran 2.0 (Cat# [TT210002]).