

Product datasheet for PH316802

SEC31A (NM_001077208) Human Mass Spec Standard

Product data:

Product Type:	Mass Spec Standards
Description:	SEC31A MS Standard C13 and N15-labeled recombinant protein (NP_001070676)
Species:	Human
Expression Host:	HEK293
Expression cDNA Clone or AA Sequence:	RC216802
Predicted MW:	131.5 kDa
Protein Sequence:	>RC216802 protein sequence Red=Cloning site Green=Tags(s)

MKLKEVDRTAMQAWSPAQNHPYIYLATGTSAAQQLDADFSTNASLEIFELDLSDPSLDMKSCATFSSSHRYH
KLIWGPYKMSKGDVSGVLIAGGENGNIILYDPKIIAGDKEVVIQNDKHTGPVRALDVNIFQTNLVAS
GANESIYIWDLNNFATPMTPGAQTQPPEDISCIAWNRRVQHILASASPSGRATVWDLRKNPEIIKVS
SNRMHCSGLAWHPDVATQMVLA SEDDLPIQMWDLRFASSPLRVLENHARGILAIAWSMADPELLLS
KDAILCSNPNTGEVLYELPTNTQWCFDIQWCPNPAVL SAASFDGRISVYSIMGGSTDGLRQKQVDKLS
SSFNLDPFGTGGQPLPPLQIPQQTAAQHSIVLPLKPKPKWIRRPV GASFSFGGKLVTFENVMP SHQGA
EQQQQHVFISQVTEKEFLSRSDQLQAVQSQGF INYCQKKIDASQTEFEKNVWSFLKVNFE DDSR
GKYLELLGYRKEDLGKKIALALNKVDGANVALKDSQVAQSDGEE SPAEEQLLGEHIKEEKEESEFL
PSSGGT FNISVSGDIDGLITQALLTGNFESAVDLCLHDNRMAIILAIAGGQELLARTQKKYFAK
SQSKITRLIT AVVMKNWKEIVESCDLKNWREALAAVLTYAKPDEF SALCDLLGTRLENEGDSLL
QTQACL CYICAGNVEK LVACWTKAQDGSHP LSLQDLIEKVVILRKAVQLTQAMDTSTVGVLLAAK
MSQYANLLAAQGSIAAALFL PDNTNQPNIMQLRDLRCRAQGE PVAGHESPKIPYEKQQLPKGR
PGPVAGHHQMPRVQTQQYYPHGENPPP PGFIMHG VNPNAAGQLPTSPGHMHTQVPPYPQ
PYPYQPAQPYPFGTGGSAMYRPQQPVAPPTSNAYPNT PYISSASSYTGSQLYAAQHQASSPT
SSPATSFPPPPSSGASFQHGPGAPPSSSAYALPPGTTGPQNGW NDPPALNRVPK KKKMPEN
FMPPVITSPIMNPLGDPQSQMLQQQP SAPVPLSSQSSFPQPHLPGGQPFHG VQQPLGQTGM
PPSF SKPNIEGAPGAPIGNTFQHVQSLPTKKITKKPIPDEHLILKTTFEDLIQRCLSSAT
DPQTKRRLDDASKRLEFLYDKLREQTLSPITITSLGHNIARSIETRYNSEGLTMHTHIVSTSNF
SETSAFM PVLKVVL TQANKLGV

TRTRPLEQKLISEEDLAANDILDYKDDDDKV

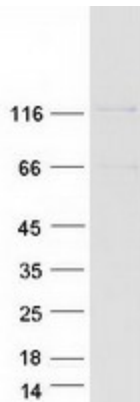
Tag:	C-Myc/DDK
Purity:	> 80% as determined by SDS-PAGE and Coomassie blue staining
Concentration:	>0.05 µg/µL as determined by microplate BCA method
Labeling Method:	Labeled with [U- ¹³ C ₆ , ¹⁵ N ₄]-L-Arginine and [U- ¹³ C ₆ , ¹⁵ N ₂]-L-Lysine



[View online »](#)

Buffer:	25 mM Tris-HCl, 100 mM glycine, pH 7.3
Storage:	Store at -80°C. Avoid repeated freeze-thaw cycles.
Stability:	Stable for 3 months from receipt of products under proper storage and handling conditions.
RefSeq:	NP_001070676
RefSeq Size:	4224
RefSeq ORF:	3615
Synonyms:	ABP125; ABP130; HSPC275; HSPC334; NEDSOSB; SEC31L1
Locus ID:	22872
UniProt ID:	O94979
Cytogenetics:	4q21.22
Summary:	The protein encoded by this gene shares similarity with the yeast Sec31 protein, and is a component of the outer layer of the coat protein complex II (COPII). The encoded protein is involved in vesicle budding from the endoplasmic reticulum (ER) and contains multiple WD repeats near the N-terminus and a proline-rich region in the C-terminal half. It associates with the protein encoded by the SEC13 homolog, nuclear pore and COPII coat complex component (SEC13), and is required for ER-Golgi transport. Monoubiquitylation of this protein by CUL3-KLHL12 was found to regulate the size of COPII coats to accommodate unusually shaped cargo. Alternative splicing results in multiple transcript variants encoding different isoforms. [provided by RefSeq, Dec 2015]

Product images:



Coomassie blue staining of purified SEC31A protein (Cat# [TP316802]). The protein was produced from HEK293T cells transfected with SEC31A cDNA clone (Cat# [RC216802]) using MegaTran 2.0 (Cat# [TT210002]).