

## Product datasheet for PH316785

### IL10 (NM\_000572) Human Mass Spec Standard

#### Product data:

Product Type:	Mass Spec Standards
Description:	IL10 MS Standard C13 and N15-labeled recombinant protein (NP_000563)
Species:	Human
Expression Host:	HEK293
Expression cDNA Clone or AA Sequence:	RC216785
Predicted MW:	20.52 kDa
Protein Sequence:	>RC216785 representing NM_000572 <b>Red</b> =Cloning site <b>Green</b> =Tags(s)  MHSSALLCCLVLLTGVRASPGQGTQSENSCTHFGNLPNMLRDLRDAFSRVKTFQMKDQLDNLLKESL LEDFKGYLGQCQALSEMIQFYLEEVMQAENQDPDIKAHVNSLGENLKTLRLRLRCHRFLPCENKSKAVE QVKNAFNKLQEKGIYKAMSEFDIFINYIEAYMTMKIRN  <b>TR</b> TRPLEQK <b>L</b> ISEEDLAANDILDYKDDDDKV
Tag:	C-Myc/DDK
Purity:	> 80% as determined by SDS-PAGE and Coomassie blue staining
Concentration:	>0.05 µg/µL as determined by microplate BCA method
Labeling Method:	Labeled with [U- <sup>13</sup> C <sub>6</sub> , <sup>15</sup> N <sub>4</sub> ]-L-Arginine and [U- <sup>13</sup> C <sub>6</sub> , <sup>15</sup> N <sub>2</sub> ]-L-Lysine
Buffer:	25 mM Tris-HCl, 100 mM glycine, pH 7.3
Storage:	Store at -80°C. Avoid repeated freeze-thaw cycles.
Stability:	Stable for 3 months from receipt of products under proper storage and handling conditions.
RefSeq:	<a href="#">NP_000563</a>
RefSeq Size:	1629
RefSeq ORF:	534
Synonyms:	CSIF; GVHDS; IL-10; IL10A; TGIF
Locus ID:	3586
UniProt ID:	<a href="#">P22301</a> , <a href="#">Q6FGW4</a>



[View online »](#)

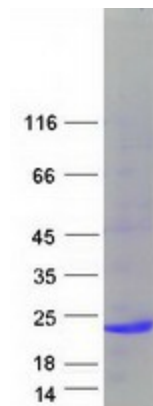
**Cytogenetics:** 1q32.1

**Summary:** The protein encoded by this gene is a cytokine produced primarily by monocytes and to a lesser extent by lymphocytes. This cytokine has pleiotropic effects in immunoregulation and inflammation. It down-regulates the expression of Th1 cytokines, MHC class II Ags, and costimulatory molecules on macrophages. It also enhances B cell survival, proliferation, and antibody production. This cytokine can block NF-kappa B activity, and is involved in the regulation of the JAK-STAT signaling pathway. Knockout studies in mice suggested the function of this cytokine as an essential immunoregulator in the intestinal tract. Mutations in this gene are associated with an increased susceptibility to HIV-1 infection and rheumatoid arthritis. [provided by RefSeq, May 2020]

**Protein Families:** Druggable Genome, ES Cell Differentiation/IPS, Secreted Protein

**Protein Pathways:** Allograft rejection, Asthma, Autoimmune thyroid disease, Cytokine-cytokine receptor interaction, Jak-STAT signaling pathway, Systemic lupus erythematosus, T cell receptor signaling pathway

### Product images:



Coomassie blue staining of purified IL10 protein (Cat# [TP316785]). The protein was produced from HEK293T cells transfected with IL10 cDNA clone (Cat# [RC216785]) using MegaTran 2.0 (Cat# [TT210002]).