

## Product datasheet for **PH316775**

### MAP2 (NM\_002374) Human Mass Spec Standard

#### Product data:

Product Type:	Mass Spec Standards
Description:	MAP2 MS Standard C13 and N15-labeled recombinant protein (NP_002365)
Species:	Human
Expression Host:	HEK293
Expression cDNA Clone or AA Sequence:	RC216775
Predicted MW:	199.3 kDa



[View online »](#)

**Protein Sequence:** >RC216775 representing NM\_002374  
 Red=Cloning site Green=Tags(s)

MADERKDEAKAPHWTSAPL TEASAHSHPPEIKDQGGAGEGLVRSANGFPYREDEEGAFGEHGSQGTYSNT  
 KENGINDELTSADRETAEEVSARIVQVVTAEAVAVLKGEQEKEAQHKDQTAALPLAAEETANLPPSPPPS  
 PASEQTVTVEEDLLTASKMEFHQQELTPSTAEPSSDQKEKESEKQSKPGEDLKHAALVSQPETTKTYPDK  
 KDMQGTREEEKAPLALFGHTLVASLEDMKQKTEPSLVVPGIDLPKEPPTPKEQKDFIEMPTAEKKDEWGL  
 VAPISPGPLTPMREKDVFDIPKWEKGQFDSMPSPFQGGSTLPLDVMKNEIVTETSPFAPAFLLQPD  
 KSLQQTSGPATAKDSFKIEEPHEAKPKMAEAPPSEAMTLPKDAHIPVVEEHVMGKVL EEEKEA INQETV  
 QQRDTFTPSGQEPILTEKETELKLEKTTISDKEAVPKESKPPKPADEEIGIIQTSTEHTFSEQKDQEP  
 TDMLKQDSFPVLEQAVTDSAMTSKLEKAMTEPSALIEKSSIQELFEMRVDDKDKIEGVGAATSAELDM  
 PFYEDKSGMSKYFETSALKEEATKSIPEGSDYYELSDTRESVHESIDTMSPMHKNKDEKQFQTKESQSP  
 PAQEAGYSTLAQSYPDLPEEPSSPQERMFTIDPKVYGEKRDLSKNKDDLTL SRSGLGGRSAIEQRSM  
 SINLPMSCLSIALGFNFRGHDL SPLASDILTNTSGSMDEGDDYLPATTPALEKAPCFPVESKEEEEQIE  
 KVYKATGEESTQAEISCEPFLAKDFYKNGTVMAPDLPEMLDLAGTRSRLASVSADAEVARRKSVPSETV  
 EDSRTGLPPVTDENHVIKTDSQL EDLGYCVFNKYTVPLPSPVQDSENLSGESGTFYEGTDDKVRRLAT  
 DLSLIEVKLAAAGRVKDEFVSDKEASAHISGDKSGLSKEFDQEKKANDRLDTVLEKSEEHADSKHEAKKT  
 EEAGDEIETFGLVTYEQALAKDL SIPTDASSEKA EKGLSSVPEIAEVEPSKKVEQGLDFAVQGLDVKI  
 SDFGQMASGLNIDRRATELKL EATQDMTPSSKAPQEADAFMGVSESGHMKEGTKVSETEVKQKVPDLV  
 HQEAVDKEESESSGEHESL TMESLKADEGKKTSPESLIQDEI AVKLSVEIPCPAVSEADLATDERA  
 DVQMEFIQGPKEESKETPDISITPSDVAEPLHETIVSEPAEIQSEEEEIEAQGEYDKLLFRSDTLQITDL  
 GVSGAREEFVETCPSEHKGVI ESVVTIEDDFITVVQTTTDEGESGSHSVRFAALEQPEVERRRSPHDEEE  
 FEVEEAAEAQAEPKDGSP EAPASPEREEVALSEYKTETYDDYKDETTIDDSIMDADSLWVDTQDDRSIM  
 TEQLETIPKEEKA EARRSSLEKHRKEKPFKTRGRISTPERKVAKKEPSTVSRDEVRRKAVYKKAEL  
 AKKTEVQAHSRKFILKPAIKYTRPHTLSCV KRKTTAAGGESALAPSVFKQAKDKVSDGVTKSPEKRSS  
 LPRPSSILP RRGVSGDRDENFSLNSSISSARRTTRSEPIRRAGKSGTSTPTTPGSTAITPGTPPSYS  
 SRTPGTPGTPSYPRTPHTPGTPKSAILVPSEKKVAIIRTPPKSPATPKQLRLINQPLDLKNVSKIGST  
 DNIKYQPKGGQVQIVTKKIDL SHVTSKCGSLKNIGHRPGGGRVKIESVKLDFKEKAQAKVGLDNAHHVP  
 GGGNVKIDSQKLNFRHAKARVDHGAEIITQSPGRSSVASPRRLSNVSSSGSINLLESPQLATLAEDVTA  
 ALAKQGL

TRTRPLEQKLISEEDLAANDILDYKDDDDKV

**Tag:** C-Myc/DDK

**Purity:** > 80% as determined by SDS-PAGE and Coomassie blue staining

**Concentration:** >0.05 µg/µL as determined by microplate BCA method

**Labeling Method:** Labeled with [U- 13C6, 15N4]-L-Arginine and [U- 13C6, 15N2]-L-Lysine

**Buffer:** 25 mM Tris-HCl, 100 mM glycine, pH 7.3

**Storage:** Store at -80°C. Avoid repeated freeze-thaw cycles.

**Stability:** Stable for 3 months from receipt of products under proper storage and handling conditions.

**RefSeq:** [NP\\_002365](#)

**RefSeq Size:** 6534

**RefSeq ORF:** 5481

**Synonyms:** MAP-2; MAP2A; MAP2B; MAP2C

**Locus ID:** 4133

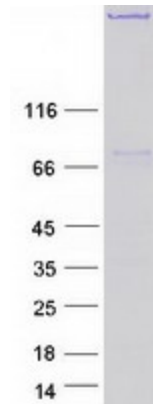
UniProt ID: [P11137](#), [Q6NYC5](#)

Cytogenetics: 2q34

**Summary:** This gene encodes a protein that belongs to the microtubule-associated protein family. The proteins of this family are thought to be involved in microtubule assembly, which is an essential step in neurogenesis. The products of similar genes in rat and mouse are neuron-specific cytoskeletal proteins that are enriched in dendrites, implicating a role in determining and stabilizing dendritic shape during neuron development. A number of alternatively spliced variants encoding distinct isoforms have been described. [provided by RefSeq, Jan 2010]

**Protein Families:** Adult stem cells, Druggable Genome, ES Cell Differentiation/IPS

### Product images:



Coomassie blue staining of purified MAP2 protein (Cat# [TP316775]). The protein was produced from HEK293T cells transfected with MAP2 cDNA clone (Cat# [RC216775]) using MegaTran 2.0 (Cat# [TT210002]).