

Product datasheet for PH316753

EFEMP1 (NM_001039348) Human Mass Spec Standard

Product data:

Product Type:	Mass Spec Standards
Description:	EFEMP1 MS Standard C13 and N15-labeled recombinant protein (NP_001034437)
Species:	Human
Expression Host:	HEK293
Expression cDNA Clone or AA Sequence:	RC216753
Predicted MW:	54.6 kDa
Protein Sequence:	>RC216753 protein sequence Red=Cloning site Green=Tags(s)

MLKALFLTMLTLALVKSQDTEETITYTQCTDGYEWDVPVRQQCKDIDECDIVPDACKGGMKCVNHYGGYLC
LPKTAQIIIVNNEQPQETQPAEGTSGATTGVVAASSMATSGVLPGGGFVASAAAVAGPEMQTGRNNFVIR
RNPADPQRIPSNPSHRIQCAAGYEQSEHNVCQDIDECTAGTHNCRADQVCINLRGSFACQCPPGYQKRGE
QCVDIDECTIPPYCHQRCVNTPGSFYQCQSPGFQLAANNYTCVDINECDASNQCAQQCYNILGSFICQCN
QGYELSSDRLNCEDIDECRTSSYLQYQCVNEPGKFCMCPQGYQVRSRTCQDINECETTNECREDEMC
WNYHGGFRCYPRNPCQDPYILTPENRCVCPVSNAMCRELPQSIVYKYMSIRSDRSVPSDIFQIQATTIYA
NTINTFRIKSGNENGEFYLRQTSPVSAMLVLVKSLSGPREHIVDLEMLTVSSIGTFRTSSVLRLTIIVGP
FSF

TRTRPLEQKLISEEDLAANDILDYKDDDDKV

Tag:	C-Myc/DDK
Purity:	> 80% as determined by SDS-PAGE and Coomassie blue staining
Concentration:	>0.05 µg/µL as determined by microplate BCA method
Labeling Method:	Labeled with [U- 13C6, 15N4]-L-Arginine and [U- 13C6, 15N2]-L-Lysine
Buffer:	25 mM Tris-HCl, 100 mM glycine, pH 7.3
Storage:	Store at -80°C. Avoid repeated freeze-thaw cycles.
Stability:	Stable for 3 months from receipt of products under proper storage and handling conditions.
RefSeq:	NP_001034437
RefSeq Size:	3094
RefSeq ORF:	1479



[View online »](#)

Synonyms: DHRD; DRAD; FBLN3; FBNL; FIBL-3; MLVT; MTLV; S1-5

Locus ID: 2202

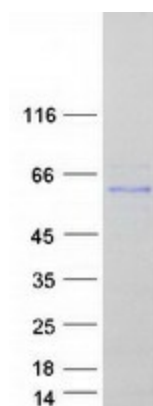
UniProt ID: [Q12805](#), [A0A0S2Z4F1](#), [B2R6M6](#)

Cytogenetics: 2p16.1

Summary: This gene encodes a member of the fibulin family of extracellular matrix glycoproteins. Like all members of this family, the encoded protein contains tandemly repeated epidermal growth factor-like repeats followed by a C-terminus fibulin-type domain. This gene is upregulated in malignant gliomas and may play a role in the aggressive nature of these tumors. Mutations in this gene are associated with Doyme honeycomb retinal dystrophy. Alternatively spliced transcript variants that encode the same protein have been described. [provided by RefSeq, Nov 2009]

Protein Families: Secreted Protein

Product images:



Coomassie blue staining of purified EFEMP1 protein (Cat# [TP316753]). The protein was produced from HEK293T cells transfected with EFEMP1 cDNA clone (Cat# [RC216753]) using MegaTran 2.0 (Cat# [TT210002]).