

Product datasheet for PH316747

LRPPRC (NM_133259) Human Mass Spec Standard

Product data:

Product Type:	Mass Spec Standards
Description:	LRPPRC MS Standard C13 and N15-labeled recombinant protein (NP_573566)
Species:	Human
Expression Host:	HEK293
Expression cDNA Clone or AA Sequence:	RC216747
Predicted MW:	157.7 kDa
Protein Sequence:	>RC216747 representing NM_133259 Red=Cloning site Green=Tags(s)

MAALLRSARWLLRAGAAPRLPLSLRLLPGPGRLHAASYLPAARAGPVAGGLSPARLYAIAAKEKDIQE
ESTFSSRKISNQFDWALMRLDLSVRRTGRIPKLLQKVFNDTCRSGGLGGSHALLLRSCGSLPELKLE
ERTEFAHRIWDTLQKLGAVYDVSHYNALLKVYLQNEYKFSPTDFLAKMEEANIQPNRVTYQRLIASYCNV
GDIEGASKILGFMKTKDLPVTEAVFSALVTGHARAGDMENAENILTVMRDAGIEPGPDTYLALLNAYAEK
GDIDHVQTLTEKVEKSELHMDRDLQIIFSFSKAGYPQYVSEILEKVTTCERRYIPDAMNILLVTEKL
EDVALQILLACPVSKEDGPSVFGSFFLQHCVTMNTPEKLDYCKKLEKQVMSFPLQFTLHCALLANKT
DLAKALMKAVKEEGFPPIRPHYFWPLLVGRRKEKNVQGIIEILKGMQELGVHPDQETTYTDYVIPCDFSUNS
ARAILQENGLSDSDMFSQAGLRSEAANGNLDVLSFLKSNTLPISLQSISSLLLGFRSMNINLWSEI
TELLYKDGRYCQEPGPTAEAVGYFLYNLIDSMSEVQAKEEHLRQYFHQLEKMNKIPENIYRGINLL
ESYHVPelikDAHLLVESKNLDFQKTVQLTSSSESTLETLKAENQPIRDVLLKQLILVLCSEENMQKALE
LKAKYESDMVTGGYAALINLCCRHDKVEDALNLKEEFDRLDSSAVLDTGKYVGLVRVLAKHGKLDQAINI
LKEMKEKDVLIKDTTALSFHMLNGAALRGEIETVKQLHEAIVTLGLAEPSTNISFPLVTVHLEKGDST
ALEVAIDCYEKYKVLPRIHVLCCKLVEKGETDLIQKAMDFVSQEQGEMVMLYDLFFAFLQTYGNYEAKKI
IETPGIRARSARLQWFCDRCVANNQVETLEKVELTQKLFECDRDQMYNLLKLYKINGDWQRADAVWNK
IQEENVIPREKTLRLLAEILREGNQEVFPDVPPELWYEDEKHSLSNSSASTTEPDFQKDILACRLNQKKG
AYDIFLNAEQNIVFNAETYSNLIKLLMSEDYFTQAMEVKAFETHIKGFTLNDAAANSRLIITQVRRDYL
KEAVTTLKTVLDQQQTPSRLAVTRVIQALAMKGDVENIEVVQKMLNGLEDISIGLSKMFVINNIALAQIKN
NNIDAAIENIENMLTSENKVIIEPQYFGLAYLFRKVIIEEQLEPAVEKISIMAERLANQFAIYKPVTDFFLQ
LVDAGKVDARALLQRCGAIAEQTPILLFLLRNSRKQKASTVKSVELEIPELNEKEEAYNSLMKSYVS
EKDVTSAKALYEHLTAKNTKLDLFLKRYASLLKYAGEPVPFIEPPESFEFYAQLRKLRENS

TRTRPLEQKLISEEDLAANDILDYKDDDDKV

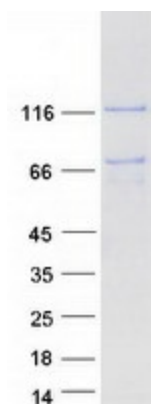
Tag:	C-Myc/DDK
Purity:	> 80% as determined by SDS-PAGE and Coomassie blue staining
Concentration:	>0.05 µg/µL as determined by microplate BCA method



[View online »](#)

Labeling Method:	Labeled with [U- ¹³ C ₆ , ¹⁵ N ₄]-L-Arginine and [U- ¹³ C ₆ , ¹⁵ N ₂]-L-Lysine
Buffer:	25 mM Tris-HCl, 100 mM glycine, pH 7.3
Storage:	Store at -80°C. Avoid repeated freeze-thaw cycles.
Stability:	Stable for 3 months from receipt of products under proper storage and handling conditions.
RefSeq:	NP_573566
RefSeq Size:	5095
RefSeq ORF:	4182
Synonyms:	CLONE-23970; GP130; LRP130; LSFC; MC4DN5
Locus ID:	10128
UniProt ID:	P42704 , E5KNY5
Cytogenetics:	2p21
Summary:	This gene encodes a leucine-rich protein that has multiple pentatricopeptide repeats (PPR). The precise role of this protein is unknown but studies suggest it may play a role in cytoskeletal organization, vesicular transport, or in transcriptional regulation of both nuclear and mitochondrial genes. The protein localizes primarily to mitochondria and is predicted to have an N-terminal mitochondrial targeting sequence. Mutations in this gene are associated with the French-Canadian type of Leigh syndrome. [provided by RefSeq, Mar 2012]

Product images:



Coomassie blue staining of purified LRPPRC protein (Cat# [TP316747]). The protein was produced from HEK293T cells transfected with LRPPRC cDNA clone (Cat# [RC216747]) using MegaTran 2.0 (Cat# [TT210002]).