

Product datasheet for PH316745

WDHD1 (NM_007086) Human Mass Spec Standard

Product data:

Product Type:	Mass Spec Standards
Description:	WDHD1 MS Standard C13 and N15-labeled recombinant protein (NP_009017)
Species:	Human
Expression Host:	HEK293
Expression cDNA Clone or AA Sequence:	RC216745
Predicted MW:	125.8 kDa
Protein Sequence:	>RC216745 representing NM_007086 Red=Cloning site Green=Tags(s)

MPATRKPMRYGHTTEGHTVCFDDSGSFIVTCGSDGDVRIWEDLDDDDPKFINVGEKAYSALKSGKLVTA
VSNNTIQVHTFPEGVPDGLTRFTTNANHVVFNGDGTIAAGSSDFLVKIVDVMSSQKTRFRGHDPVL
SLSFDPKDIFLASASCDGSRVWQISDQTCAISWPLLQKCNVDINAKSICRLAWQPKSGKLLAIPVEKSV
KLYRRESWSHQFDLSDNFISQTLNIVTWSPCGQYLAAGSINGLIIVWNVETKDCMERVKHEKGYAICGLA
WHPTCGRISYTD AEGNLGLENVCDPSGKTSSSKVSSRVEKDYNDLFDGDDMSNAGDFLNDNAVEIPFSF
KGIINDDDEDELMMASGRPRQRSHILEDDENSVDISMLKTGSSLLKEEEEDGQEGSIHNLPLVTSQRPF
YDGPMPTRPQKPFQSGSTPLHLTHRFMVWNSIGIIRCYNDEQDNAIDVEFHDTSIHHATHLSNTLNVTIA
DLSHEAILLACESTDELASKLHCLHFSSWDSKKEWIIDLQONEDIEAICLGQGWAAAATSALLLRLFTIG
GVQKEVSLAGPVVSMAGHGEQLFIVYHRGTGFDGDQCLGVQLLELGKKKQILHGDPLPLTRKSYLAWI
GFSAEPTCYVDSEGI V RMLNRGLGNTWTPICNTRHCKGKSDHYWVVG I HENPQQLRCIPCKGSRFPPT
LPRPAVA ILSFKLPYCQIATEKQMEEQFWRSVIFHNHLDYLAKNGYEYEESTKNQATKEQQELLMKMLA
LSCKLEREFRCVELADLMTQNAVNLAIKYASRSRKLILAQKLSLAVEKAAELTATQVEEEEEEDFRKK
LNAGYSNTATEWSQPRFRNQVEEDAEDSGEADDEEKPEIHKPGQNSFSKSTNSSDVSASGAVTFSSQGR
VNPFKVSASSKEPAMSMNSARSTNILDNMGKSSKSTALSRRTTNEKSPIIKPLIPKPKPKQASAASYFQ
KRNSQTNKTEEVKEENLKNVLS ETPAICPPQNTENQRPKTGFQMWLEENRSNILSDNPDFSDEADIKEG
MIRFRVLSTEERK V WANKAKGETASEGTEAKKRKRVD ESD ETENQEEKAKENLNL SKKQKPLDFSTNQK
LSAFAFKQE

TRTRPLEQKLI SEEDLAANDILDYKDDDDKV

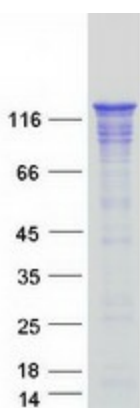
Tag:	C-Myc/DDK
Purity:	> 80% as determined by SDS-PAGE and Coomassie blue staining
Concentration:	>0.05 µg/µL as determined by microplate BCA method
Labeling Method:	Labeled with [U- ¹³ C ₆ , ¹⁵ N ₄]-L-Arginine and [U- ¹³ C ₆ , ¹⁵ N ₂]-L-Lysine
Buffer:	25 mM Tris-HCl, 100 mM glycine, pH 7.3



[View online »](#)

Storage:	Store at -80°C. Avoid repeated freeze-thaw cycles.
Stability:	Stable for 3 months from receipt of products under proper storage and handling conditions.
RefSeq:	NP_009017
RefSeq Size:	4734
RefSeq ORF:	3387
Synonyms:	AND-1; AND1; CHTF4; CTF4
Locus ID:	11169
UniProt ID:	O75717
Cytogenetics:	14q22.2-q22.3
Summary:	The protein encoded by this gene contains multiple N-terminal WD40 domains and a C-terminal high mobility group (HMG) box. WD40 domains are found in a variety of eukaryotic proteins and may function as adaptor/regulatory modules in signal transduction, pre-mRNA processing and cytoskeleton assembly. HMG boxes are found in many eukaryotic proteins involved in chromatin assembly, transcription and replication. Alternative splicing results in two transcript variants encoding different isoforms. [provided by RefSeq, Jul 2008]
Protein Families:	Druggable Genome, Transcription Factors

Product images:



Coomassie blue staining of purified WDHD1 protein (Cat# [TP316745]). The protein was produced from HEK293T cells transfected with WDHD1 cDNA clone (Cat# [RC216745]) using MegaTran 2.0 (Cat# [TT210002]).