

## Product datasheet for PH316742

### Symplekin (SYMPK) (NM\_004819) Human Mass Spec Standard

#### Product data:

Product Type:	Mass Spec Standards
Description:	SYMPK MS Standard C13 and N15-labeled recombinant protein (NP_004810)
Species:	Human
Expression Host:	HEK293
Expression cDNA Clone or AA Sequence:	RC216742
Predicted MW:	141 kDa
Protein Sequence:	>RC216742 representing NM_004819 Red=Cloning site Green=Tags(s)

MASGSGDSVTRRSVASQFFTQEEGPGIDGTTSERVVDLLNQAALITNDSKITVLKQVQELIINKDPTLL  
DNFLDEIIAFQADKSIIEVRKFVIGFIEEACKRDIELLLKLIANLNMLLRDENNVVKKAILTMTQLYKVA  
LQWMVKSRISEIQEACWDMVSAMAGDIILLLDSDNDGIRTHAIKFVEGLIVTLSPRMADSEIPRRQEH  
ISLDRIIPRDHPYIQYNNVWEEGKAALQLLKFMVHPAIISSINLTALGSLANIARQRPFMSEVIQAYET  
LHANLPPTLAKSQVSSVRKNLKLHLLSVLKHPASLEFQAQITTLVLDLGTQPAEIARNMPSSKDTRKRPR  
DDSDSTLKKMKLEPNLGEDDEDKLEPGPSGTSKASAQISGQSDTDITAEFLQPLLTPDNVANLVLSMV  
YLPEAMPASFQAIYTPVESAGTEAQIKHLARLMATQMTAAGLPGGVEQTKQCKEEPKEEKVVKTESVLIK  
RRLSAQQQAI SVVGSLSMSPL EEEAPQAKRRPEPIIPVTQPRLAGAGGRKKIFRLSDVLKPLTDAQVEA  
MKLGAVKRILRAEKAVACSGAAQVRIKILASLVTQFNGLKAEVLSF ILEDVRRARLDLAF AWLYQEYNAY  
LAAGASGSLDKYEDCLIRLLSGLQEKPDQKDGIFTKVVLEAPLITESALEVVRKYCEDESRTYLGMSLTLR  
DLIFKRPSRQFQYLHVLLDLSSHEKDKVRSQALLFIKRMYEKEQLREYVEKFAFNLYQLLVHPNPPSVLF  
GADKDEVAAPWTEETVKQCLYLYLALLPQNHKLIHELAAVYTEAIADIKRTVLRVIEQPIRGMGMNSPE  
LLLLVENC PKGAETLVTRCLHSLTDKVPSPSELVKRVRDLYHKRLPDVRFLLPVLNGLKKEVEIQALPKL  
IKLNPIVVKEVFNRLGTQHGEENSAL SPLNPGELLIALHNIDSVKCDMKSIIKATNLCAERNVYTSEV  
LAVVMQQLMEQSPLPMLLMRTVIQSLTMYPRLLGGFVMNILSRLIMKQVWKYPKVWEGFIKCCQRTKPQSF  
QVILQLPPQQLGAVFDKCEP LREPLLAHVRSFTPHQQAHIPNSIMTILEASGKQEP EAKEAPAGPLEEDD  
LEPLTLAPAPAPRPPQDLIGLRLAQEKALKRQLEEEQKLKPGGVGAPSSSPSPSPSARPGPPPSEAMD  
FREEEGPECETPGIFISMDDDSGL TEAALLDSSLEGPLPKETAAGGLTLKEERSPQTLAPVGEDAMKTPSP  
AAEDAREPEAKGNS

TRTRPLEQKLI SEEDLAANDILDYKDDDDKV

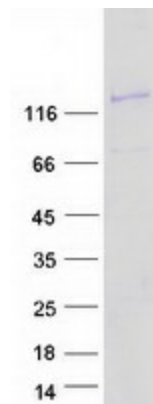
Tag:	C-Myc/DDK
Purity:	> 80% as determined by SDS-PAGE and Coomassie blue staining
Concentration:	>0.05 µg/µL as determined by microplate BCA method



[View online »](#)

<b>Labeling Method:</b>	Labeled with [U- <sup>13</sup> C <sub>6</sub> , <sup>15</sup> N <sub>4</sub> ]-L-Arginine and [U- <sup>13</sup> C <sub>6</sub> , <sup>15</sup> N <sub>2</sub> ]-L-Lysine
<b>Buffer:</b>	25 mM Tris-HCl, 100 mM glycine, pH 7.3
<b>Storage:</b>	Store at -80°C. Avoid repeated freeze-thaw cycles.
<b>Stability:</b>	Stable for 3 months from receipt of products under proper storage and handling conditions.
<b>RefSeq:</b>	<a href="#">NP_004810</a>
<b>RefSeq Size:</b>	4188
<b>RefSeq ORF:</b>	3822
<b>Synonyms:</b>	Pta1; SPK; SYM
<b>Locus ID:</b>	8189
<b>UniProt ID:</b>	<a href="#">Q92797</a> , <a href="#">A0A024R0R6</a>
<b>Cytogenetics:</b>	19q13.32
<b>Summary:</b>	This gene encodes a nuclear protein that functions in the regulation of polyadenylation and promotes gene expression. The protein forms a high-molecular weight complex with components of the polyadenylation machinery. It is thought to serve as a scaffold for recruiting regulatory factors to the polyadenylation complex. It also participates in 3'-end maturation of histone mRNAs, which do not undergo polyadenylation. The protein also localizes to the cytoplasmic plaques of tight junctions in some cell types. [provided by RefSeq, Jul 2008]
<b>Protein Pathways:</b>	Tight junction

### Product images:



Coomassie blue staining of purified SYMPK protein (Cat# [TP316742]). The protein was produced from HEK293T cells transfected with SYMPK cDNA clone (Cat# [RC216742]) using MegaTran 2.0 (Cat# [TT210002]).