

Product datasheet for PH316727

UBE3A (NM_000462) Human Mass Spec Standard

Product data:

Product Type:	Mass Spec Standards
Description:	UBE3A MS Standard C13 and N15-labeled recombinant protein (NP_000453)
Species:	Human
Expression Host:	HEK293
Expression cDNA Clone or AA Sequence:	RC216727
Predicted MW:	100.5 kDa
Protein Sequence:	>RC216727 representing NM_000462 Red=Cloning site Green=Tags(s)

MEKLNHCYWKSGEPQSDIEASRMKRAAAKHLIERYYHQLTEGCGNEACTNEFCASCPTFLRMDNNAAI
KALELYKINAKLCDPHPSKKGASSAYLENSKGGAPNNSCSEIKMNKKGARIDFKDVTYLTEEKVYEILELC
REREDYSPLIRVIGRVFSSAEALVQSFRKVKQHTKEELKSLQAKDEDEKDEKEKAACSAAMEEDSEAS
SSRIGDSSQGDNNLQKLGPDVSVSDIDAIRRVYTRLLSNEKIETAFNLVYLSNVECDLTYHNVSYRD
PNYLNLFIIIVMENRNLHSPEYLEMALPLFCAMSKLPLAAQGLIRLWSKYNADQIRRMETFQQLITYK
VISNEFNARNLVNDDAIVAASKCLKMVYYANVVGGEVDTNHNEEDDEEPIPESELTLQELLGEERRNK
KGPRVDPLETELGVKTLDCRKLIPFEFIFNEPLNEVLEMDKDYTFKVFETENKFSFMTCPFILNAVTKN
LGLYYDNIRIRMYERRITVLYSLVQGGQLNPYLRLKVRDDHIIDDALVRLEMIAMENPADLKKQLYVEFE
GEQGVDEGGVSKFFQLVVEEIFNPDIGMFTYDESTKLFWFNPSSFETEGQFTLIGIVLGLAIYNNCILD
VHFPMVYRKLKMGKGTFRDLGDSHPVLYQSLKDLLEYEGNVEDMMITFQISQTDLFGNPMYDLKENG
DKIPITNENRKEFVNLVSDYILNKSVEKQKAFRRGFHMVTNESPLKYLFRPEEIELLICGSRNLDLQAL
EETTEYDGGYTRDSVLIREFWEIVHSFTDEQKRLFLQFTTGTDRAPVGGGLKLMIIAKNGPDERLPTS
HTCFNVLLEPEYSSKEKLERLLKAITYAKGFGML

TRTRPLEQKLISEEDLAANDILDYKDDDDKV

Tag:	C-Myc/DDK
Purity:	> 80% as determined by SDS-PAGE and Coomassie blue staining
Concentration:	>0.05 µg/µL as determined by microplate BCA method
Labeling Method:	Labeled with [U- ¹³ C ₆ , ¹⁵ N ₄]-L-Arginine and [U- ¹³ C ₆ , ¹⁵ N ₂]-L-Lysine
Buffer:	25 mM Tris-HCl, 100 mM glycine, pH 7.3
Storage:	Store at -80°C. Avoid repeated freeze-thaw cycles.
Stability:	Stable for 3 months from receipt of products under proper storage and handling conditions.



[View online »](#)

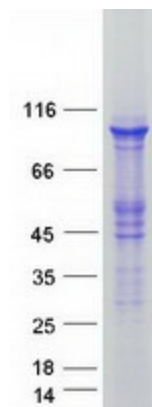
RefSeq:	NP_000453
RefSeq Size:	4516
RefSeq ORF:	2625
Synonyms:	ANCR; AS; E6-AP; EPVE6AP; HPVE6A
Locus ID:	7337
UniProt ID:	Q05086
Cytogenetics:	15q11.2

Summary: This gene encodes an E3 ubiquitin-protein ligase, part of the ubiquitin protein degradation system. This imprinted gene is maternally expressed in brain and biallelically expressed in other tissues. Maternally inherited deletion of this gene causes Angelman Syndrome, characterized by severe motor and intellectual retardation, ataxia, hypotonia, epilepsy, absence of speech, and characteristic facies. The protein also interacts with the E6 protein of human papillomavirus types 16 and 18, resulting in ubiquitination and proteolysis of tumor protein p53. Alternative splicing of this gene results in three transcript variants encoding three isoforms with different N-termini. Additional transcript variants have been described, but their full length nature has not been determined. [provided by RefSeq, Jul 2008]

Protein Families: Druggable Genome

Protein Pathways: Ubiquitin mediated proteolysis

Product images:



Coomassie blue staining of purified UBE3A protein (Cat# [TP316727]). The protein was produced from HEK293T cells transfected with UBE3A cDNA clone (Cat# [RC216727]) using MegaTran 2.0 (Cat# [TT210002]).