

Product datasheet for PH316722

ITGA11 (NM_001004439) Human Mass Spec Standard

Product data:

Product Type:	Mass Spec Standards
Description:	ITGA11 MS Standard C13 and N15-labeled recombinant protein (NP_001004439)
Species:	Human
Expression Host:	HEK293
Expression cDNA Clone or AA Sequence:	RC216722
Predicted MW:	133.47 kDa
Protein Sequence:	>RC216722 representing NM_001004439 Red=Cloning site Green=Tags(s)

MDLPRGLVVAWALSLWPGFTDTFNMDTRKPRVIPGSRTAFFGYTVQQHDISGNKWL VVGAPLETNGYQKT
GDVYKCPVIHGNC TKLNLGRVTL SNVSRKDNMRLGLSLATNPKDNSFLAC SPLWSHECGSSYYTTGMCS
RVNSNFRFSKTVAPALQRCQTYMDIVIVLDGNSIYPWVEVQHFLINILKKFYIGPGQIQVGVVQYGEDV
VHEFHLNDYRSVKDVVEAASHIEQRGGTETRTAFGIEFARSEAFQKGRKGAKKVMIVITDGESHDPDL
EKVIQQSERDNVTRYAVAVLGYNNRRGINPETFLNEIKYIASDPDDKHHFNVTDEAALKDIVDALGDRIF
SLEGTNKNETSFGLEMSQTGFSSHVVEDGVLLGAVGAYDWN GAVLKETSAGKVIPLRESYLKEFPEELKN
HGAYLGYTVTSSRQGRVYVAGAPRFNHTGK VILFTMHNRS LTIHQAMRQQIGSYFGSEITSVDID
GDGVTDVLLVGAPMYFNEGRERKGVYVYELRQNL FVYNGTLKDSHSYQNARFGSSIASVRDLNQDSYNDV
VVGAPLEDNHAGAIYIFHGFRG SILKTPKQRITASELATGLQYFGCSIHGQLDLNEDGLIDLAVGALGNA
VILWSRPVQINASLHFEP SKINIFHRDCKRSGRDATCLAAFLCF TPIFLAPHFQTTTVGIRYNATMDER
RYTPRAHLDEGGDRFTNRAVLLSSGQELCERINFHVLDTADYVKPVTF SVEYSLEDPDHGPMDDGWPTT
LRVSVPFWNGCNEDEHCVPDLVLDARSDLP TAMEYQQRVLRKPAQDCSAYT LSFDTTVFIIESTRQRVAV
EATLENRGENAYSTV LNISQSANLQFASLIQKEDSDGSI ECVNEERRLQKQVCNVSYPFFRAKAKVAFRL
DFEFKSIFLHLEIELAAGSDSNERDSTKEDNVAPLRFHLKYEADVLF TRSSSLSHYEVKPNSSLERYD
GIGPPFSCIFRIQNLGLFPIHGMMKITIPIATRSGNRLLKLRDFLTDEANTSCNIWGNSTEYRPTVVEE
DLRRAPQLNHSNSDVVSINCNI RLVPNQEINFHLLGNLWLRSLKALKYKSMKIMVNAALQRQFHSPFIFR
EEDPSRQIVFEISKQEDWQVPIWIIVGSTLGG LLLLALLVLALWKLGFRRSARRRREPGLDPTPKVLE

TRTRPLEQKLISEEDLAANDILDYKDDDDKV

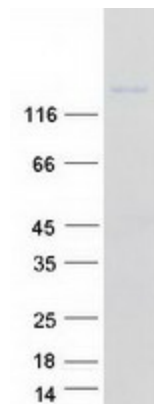
Tag:	C-Myc/DDK
Purity:	> 80% as determined by SDS-PAGE and Coomassie blue staining
Concentration:	>0.05 µg/µL as determined by microplate BCA method
Labeling Method:	Labeled with [U- ¹³ C ₆ , ¹⁵ N ₄]-L-Arginine and [U- ¹³ C ₆ , ¹⁵ N ₂]-L-Lysine
Buffer:	25 mM Tris-HCl, 100 mM glycine, pH 7.3



[View online »](#)

Storage:	Store at -80°C. Avoid repeated freeze-thaw cycles.
Stability:	Stable for 3 months from receipt of products under proper storage and handling conditions.
RefSeq:	NP_001004439
RefSeq Size:	5035
RefSeq ORF:	3564
Synonyms:	HsT18964
Locus ID:	22801
UniProt ID:	Q9UKX5 , B3KTN6
Cytogenetics:	15q23
Summary:	This gene encodes an alpha integrin. Integrins are heterodimeric integral membrane proteins composed of an alpha chain and a beta chain. This protein contains an I domain, is expressed in muscle tissue, dimerizes with beta 1 integrin in vitro, and appears to bind collagen in this form. Therefore, the protein may be involved in attaching muscle tissue to the extracellular matrix. Alternative transcriptional splice variants have been found for this gene, but their biological validity is not determined. [provided by RefSeq, Jul 2008]
Protein Families:	Druggable Genome, Transmembrane
Protein Pathways:	Arrhythmogenic right ventricular cardiomyopathy (ARVC), Dilated cardiomyopathy, ECM-receptor interaction, Focal adhesion, Hypertrophic cardiomyopathy (HCM), Regulation of actin cytoskeleton

Product images:



Coomassie blue staining of purified ITGA11 protein (Cat# [TP316722]). The protein was produced from HEK293T cells transfected with ITGA11 cDNA clone (Cat# [RC216722]) using MegaTran 2.0 (Cat# [TT210002]).