

Product datasheet for PH316706

ICAM2 (NM_001099788) Human Mass Spec Standard

Product data:

Product Type:	Mass Spec Standards
Description:	ICAM2 MS Standard C13 and N15-labeled recombinant protein (NP_001093258)
Species:	Human
Expression Host:	HEK293
Expression cDNA Clone or AA Sequence:	RC216706
Predicted MW:	30.7 kDa
Protein Sequence:	<p>>RC216706 protein sequence</p> <p>Red=Cloning site Green=Tags(s)</p> <p>MSSFGYRTLTVLFTLICCPGSDEKVFVHVRPKKLAVEPKGSLEVNCSTTCNQPEVGGLETSLDKILLD EQAQWKHYLVSNISHDTVLQCHFTCSGKQESMNSNVSYQPPRQVILTLQPTLVAVGKSFTIECRVPTVE PLDSLTLFLFRGNETHYETFGKAAPAQEATATFNSTADREDGHRNFSCLAVLDLMSRGGNIFHKHSAP KMLEIYEPVSDSQMVIIIVTVSVLLSLFVTSVLLCFIFGQHLRQQRMGTYGVRAAWRRLPQAFRP</p> <p>TRTRPLEQKLISEEDLAANDILDYKDDDDKV</p>
Tag:	C-Myc/DDK
Purity:	> 80% as determined by SDS-PAGE and Coomassie blue staining
Concentration:	>0.05 µg/µL as determined by microplate BCA method
Labeling Method:	Labeled with [U- ¹³ C ₆ , ¹⁵ N ₄]-L-Arginine and [U- ¹³ C ₆ , ¹⁵ N ₂]-L-Lysine
Buffer:	25 mM Tris-HCl, 100 mM glycine, pH 7.3
Storage:	Store at -80°C. Avoid repeated freeze-thaw cycles.
Stability:	Stable for 3 months from receipt of products under proper storage and handling conditions.
RefSeq:	NP_001093258
RefSeq Size:	1235
RefSeq ORF:	825
Synonyms:	CD102
Locus ID:	3384
UniProt ID:	P13598 , Q6FHE2


[View online »](#)

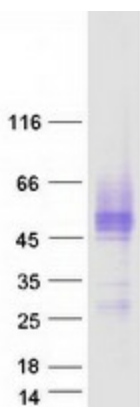
Cytogenetics: 17q23.3

Summary: The protein encoded by this gene is a member of the intercellular adhesion molecule (ICAM) family. All ICAM proteins are type I transmembrane glycoproteins, contain 2-9 immunoglobulin-like C2-type domains, and bind to the leukocyte adhesion LFA-1 protein. This protein may play a role in lymphocyte recirculation by blocking LFA-1-dependent cell adhesion. It mediates adhesive interactions important for antigen-specific immune response, NK-cell mediated clearance, lymphocyte recirculation, and other cellular interactions important for immune response and surveillance. Several transcript variants encoding the same protein have been found for this gene. [provided by RefSeq, Jul 2008]

Protein Families: ES Cell Differentiation/IPS, Transmembrane

Protein Pathways: Cell adhesion molecules (CAMs), Natural killer cell mediated cytotoxicity

Product images:



Coomassie blue staining of purified ICAM2 protein (Cat# [TP316706]). The protein was produced from HEK293T cells transfected with ICAM2 cDNA clone (Cat# [RC216706]) using MegaTran 2.0 (Cat# [TT210002]).