

Product datasheet for PH316640

CD98 (SLC3A2) (NM_002394) Human Mass Spec Standard

Product data:

Product Type:	Mass Spec Standards
Description:	SLC3A2 MS Standard C13 and N15-labeled recombinant protein (NP_002385)
Species:	Human
Expression Host:	HEK293
Expression cDNA Clone or AA Sequence:	RC216640
Predicted MW:	68 kDa
Protein Sequence:	>RC216640 protein sequence Red=Cloning site Green=Tags(s)

MELQPPEASIAVVSIPRQLPGSHSEAGVQGLSAGDSELSGSHCVAQTGLELLASGDPLPSASQNAEMIET
GSDCVTQAGLQLLASSDPPALASKNAEVTGTMSQDTEVDMKEVELNELEPEKQPMNAASGAAMSLAGAEEK
NGLVKIKVAEDEAEAAAAAKFTGLSKEELLKVAGSPGWVTRWALLLLFWLWLGMLAGAVVIVRAPRC
RELPAQKWWHTGALYRIGDLQAFQGHGAGNLAGLKGRLDYLSLKVKGLVLGPIHKNQKDDVAQTDLLQI
DPNFGSKEDFDSLLQSAAKKSIRVILDLTPNYRGENSEWFSQVDTVATKVKDALEFWLQAGVDGQVRDI
ENLKDASSFLAEWQNIKGFSEDRLLIAGTNSSDLQQILSLLESNKDLLLTSSYLSDSGSTGEHTKSLVT
QYLNATGNRWCSWSLSQARLLTSFLPAQLLRLYQLMLFTLPGTPVFSYGDEIGLDAALPGQPMEAPVML
WDESSFPDIPGAVSANMTVKGQSEDPGSLLSLFRRLSDQRSKERSLLHGFDFHAFSAGPGLFSYIRHWDQN
ERFLVVLNFGDVGLSAGLQASDLPASASLPAKADLLLSTQPGREEGSPLERLKLKLEPHEGLLLRFPYAA

SGPTRTRPLEQKLI SEEDLAANDILDYKDDDDKV

Tag:	C-Myc/DDK
Purity:	> 80% as determined by SDS-PAGE and Coomassie blue staining
Concentration:	>0.05 µg/µL as determined by microplate BCA method
Labeling Method:	Labeled with [U- ¹³ C ₆ , ¹⁵ N ₄]-L-Arginine and [U- ¹³ C ₆ , ¹⁵ N ₂]-L-Lysine
Buffer:	25 mM Tris-HCl, 100 mM glycine, pH 7.3
Storage:	Store at -80°C. Avoid repeated freeze-thaw cycles.
Stability:	Stable for 3 months from receipt of products under proper storage and handling conditions.
RefSeq:	NP_002385
RefSeq Size:	2347
RefSeq ORF:	1890



[View online »](#)

Synonyms: 4F2; 4F2HC; 4T2HC; CD98; CD98HC; MDU1; NACAE

Locus ID: 6520

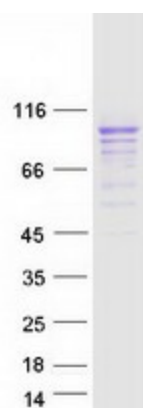
UniProt ID: [P08195](#)

Cytogenetics: 11q12.3

Summary: This gene is a member of the solute carrier family and encodes a cell surface, transmembrane protein. The protein exists as the heavy chain of a heterodimer, covalently bound through di-sulfide bonds to one of several possible light chains. The encoded transporter plays a role in regulation of intracellular calcium levels and transports L-type amino acids. Alternatively spliced transcript variants, encoding different isoforms, have been characterized. [provided by RefSeq, Nov 2010]

Protein Families: Transmembrane

Product images:



Coomassie blue staining of purified SLC3A2 protein (Cat# [TP316640]). The protein was produced from HEK293T cells transfected with SLC3A2 cDNA clone (Cat# [RC216640]) using MegaTran 2.0 (Cat# [TT210002]).